

Section 6 Topics

Vehicle Service Information

- ▶ **Service Information**
- ▶ **Vehicle Identification**
- ▶ **Information Labels**
- ▶ **Vehicle Inquiry**
- ▶ **Health Check**
- ▶ **Customizable Settings**



▶ **Worksheet**

Learning Objectives

- Locate appropriate resources for factory maintenance
- Locate vehicle identification number and production date code
- Demonstrate awareness of other vehicle information labels
- Review vehicle service history
- Perform Techstream Health Check
- Program customizable settings

Scheduled Maintenance Guide

The screenshot displays the Toyota TIS web application. At the top, there is a navigation bar with links for Home, TIS, TOYOTA, Help, My Account, and Logout. Below this, a secondary navigation bar includes Library, Vehicle Inquiry, Service Information, Reference Information (highlighted with a red arrow), and Technical Training. The main content area contains a search form with the following fields: Division (TOYOTA), Model (Camry), Year (2007), Document Group (Owner, highlighted with a red arrow), Keyword (maintenance, highlighted with a red box), and Language (English, French, Spanish). There are Clear and Search buttons. Below the search form, a 'Result' section shows 'Maintenance Schedule: 1 document(s) found.' and a single result: '1. 2007 Camry: Scheduled Maintenance Guide' (highlighted with a red box). To the right of the result are icons for favorite, print, and download.

Scheduled Maintenance

When a vehicle comes into the shop for scheduled maintenance, you can find the required inspections and services listed in that vehicle's **Scheduled Maintenance Guide**.

NOTE

The inspections and services required for scheduled maintenance can **vary from vehicle to vehicle**. Always refer to the Scheduled Maintenance Guide to be sure you're performing the right services.

In many cases, the Scheduled Maintenance Guide can be found in the vehicle's glove box. If it is not available in the vehicle, you can find it on TIS.

- Go to the Reference Information tab
- Select the Owner document group
- Enter the keyword "maintenance" and click search

031 Maintenance and General Service

Scheduled Maintenance Guide Website

Another way to find scheduled maintenance information is to scroll down to this window on the TIS Home page and click on the link.

Service Resources

[Approved Dealer Equipment Website ^{New!}](#)
Browse and purchase all equipment in the Toyota Approved Dealer Equipment program.

[Special Service Tools](#)
SPX - OTC on-line tool catalog and ordering info

[Scheduled Maintenance Guides](#) ←
Find the recommended maintenance information vehicle.

VEHICLE SERVICE INFORMATION

SCHEDULED MAINTENANCE GUIDES **SERVICE PUBLICATIONS** **SERVICE SUPPORT**

Scheduled Maintenance Guides

You can count on your Toyota dealership for Genuine Toyota Parts and factory-trained technicians. And by following the recommended maintenance schedule for your Toyota, you can enjoy many years of reliable performance while ensuring that your warranty remains intact.

The information represented on this site is for reference only and may change or be updated throughout the year. Toyota reserves the right to alter, withdraw or discontinue the availability of information on this site without prior notice. Reliance upon the information on this site creates no liability for Toyota, its employees, representatives or agents. Please refer to your Schedule Maintenance Guide for maintenance information, or contact your local dealer if you have questions.

2007 Camry
50,000 Miles - 60 Months

<< BACK - INTERVALS - NEXT >>

PRINT THIS INTERVAL FIND YOUR LOCAL DEALER

PRINT ALL INTERVALS
SCHEDULE APPOINTMENT

☐ Replace engine oil and oil filter ¹
☐ Rotate tires
☐ Visually inspect brake linings/drums and brake pads/discs

SCHEDULED MAINTENANCE GUIDES



Use the pull-down menus below and select your vehicle, vehicle year and time/mileage interval to determine your vehicle's maintenance requirements.

VEHICLE
Camry ←

VEHICLE YEAR
2007 ←

TIME/MILEAGE INTERVAL
Select ←

SEARCH ←

<http://smg.toyotapartsandservice.com/guides.php>

Scheduled Maintenance Guide Website

Another way to obtain scheduled maintenance information is from the Scheduled Maintenance Guides website:

<http://smg.toyotapartsandservice.com/guides.php>

You can reach this website using your browser or on TIS:

- Go the TIS Home page and scroll down to the Service Resources window
- Click on the “Scheduled Maintenance Guides” link

Maintenance Procedures

Home TIS TOYOTA Help My Account Logout

Library Vehicle Inquiry

Service Information Reference Information Technical Training

Division: TOYOTA
 Model: Camry
 Year: 2007

Service Category: General
 Section: Maintenance
 Keyword:
 Language: ☒ English ☐ French ☐ Spanish

Clear Search

Summary SB/TT **RM** EWD NCF SC ACCY CR

Repair Manual: 7 document(s) found.

1. MAINTENANCE: OUTSIDE VEHICLE: GENERAL MAINTENANCE (2007 Camry)
2. MAINTENANCE: INSIDE VEHICLE: GENERAL MAINTENANCE (2007 Camry)
3. MAINTENANCE: UNDER HOOD: GENERAL MAINTENANCE (2007 Camry)
4. MAINTENANCE: ENGINE: GENERAL MAINTENANCE (2007 Camry)
5. MAINTENANCE: BRAKE: GENERAL MAINTENANCE (2007 Camry)
6. MAINTENANCE: CHASSIS: GENERAL MAINTENANCE (2007 Camry)

Maintenance Procedures

For any maintenance inspections or service, refer to the Repair Manual to find the specific procedure. Look in the Maintenance section under the General category.

Accessory Installation Procedures

Home TIS TOYOTA Help My Account Logout

Library Vehicle Inquiry

Service Information Reference Information Technical Training

Division: TOYOTA Service Category: Vehicle Exterior
 Model: Camry Section: ALL
 Year: 2007 Keyword:
 Language: ☒ English ☐ French ☐ Spanish
 Clear Search

Summary SB/TT RM EWD NCF SC ACCY CR

Accessories Installation: 7 document(s) found.

- 2007-2011 Camry-Camry HV Mudguards PT769-03070 Rev. A
- 2007-2011 Camry Lip Spoiler PT29A-03070-XX Rev. A
- 2007-2011 Camry-Camry HV Body Side Molding PT29A-03075-XX Rev. B
- 2007-2011 Camry-Camry HV Door Sill Protector PTS21-03070 Rev. A
- 2007-2011 Camry Rear Bumper Applique PT747-3306B Rev. A
- 2007-2010 Camry Front End Mask PT218-35070 Rev. A

Accessory Installation Procedures

When the requested service involves installing accessories, you can find the installation instructions on TIS. Pick the appropriate category and look under the Accessory ("ACCY") tab.

Vehicle Identification

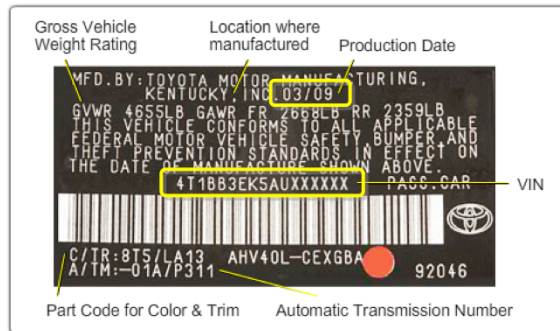
Before servicing a vehicle, you should know:

- Vehicle identification number (VIN)
- Production date

This information is needed for:

- Reviewing vehicle service history
- Ordering the correct parts

Vehicle Identification Number



Certification Label



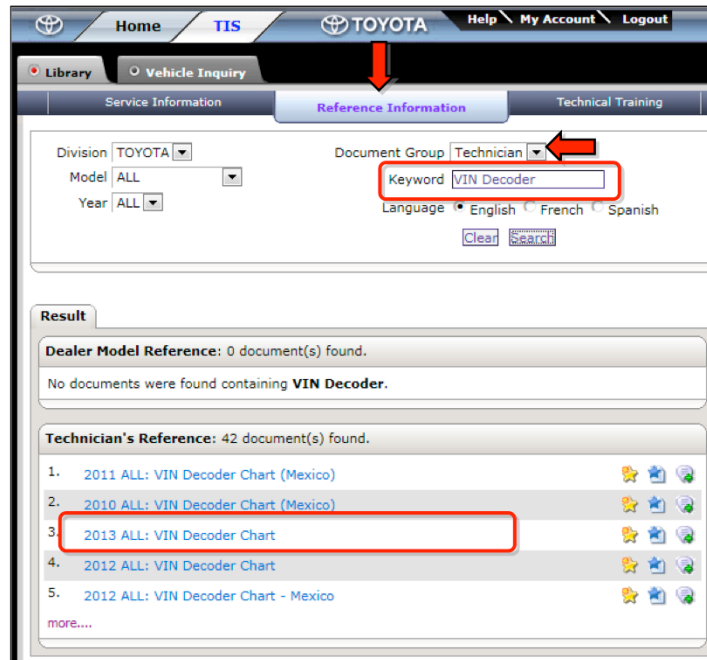
Vehicle Information Labels

Before servicing the vehicle, you need to know the vehicle identification number (VIN) and the production date. These may already be recorded on the RO, but you should always verify them.

The vehicle identification number is printed on a plaque on the dash that is visible through the lower corner of the windshield on the driver's side.

The VIN is also printed on the certification label, which can be found on the driver's door B-pillar. The certification label also contains the production date.

VIN Decoder












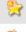





VIN Decoder

Division: TOYOTA
 Model: ALL
 Year: ALL
 Document Group: Technician
 Keyword: VIN Decoder
 Language: ☒ English ☐ French ☐ Spanish
 Clear Search

Result

Dealer Model Reference: 0 document(s) found.
 No documents were found containing **VIN Decoder**.

Technician's Reference: 42 document(s) found.

1.	2011 ALL: VIN Decoder Chart (Mexico)	  
2.	2010 ALL: VIN Decoder Chart (Mexico)	  
3.	2013 ALL: VIN Decoder Chart	  
4.	2012 ALL: VIN Decoder Chart	  
5.	2012 ALL: VIN Decoder Chart - Mexico	  

[more....](#)

VIN Decoder The Vehicle Identification number is more than just an identifying number. Embedded in the VIN are codes for:

- Plant where the vehicle was built
- Vehicle manufacturer, brand, and model year
- Engine size and type

If it is ever necessary to decode the VIN, a VIN decoder is available on TIS:


- Go to the Reference Information tab
- Select the Technician document group
- Enter the keyword “VIN decoder” and click search
- Select the decoder for the model year of the vehicle you’re inquiring about

Tire Information Label

Tire inflation pressures are required on the Multipoint Inspection form and are found on the Tire Information Label.

Tire Information Label





TIRE AND LOADING INFORMATION
RENSEIGNEMENTS RELATIFS AUX PNEUS ET À LA CHARGE DU VÉHICULE

SEATING CAPACITY	TOTAL	FRONT	REAR
NOMBRE DE PLACES	TOTAL: 5	AVANT: 2	ARRIÈRE: 3

The combined weight of occupants and cargo should never exceed 410kg or 900lbs.
 La charge du véhicule (occupants et bagages) ne doit jamais dépasser 410kg ou 900lb.

TIRE PNEU	ORIGINAL TIRE SIZE DIMENSIONS DES PNEU D'ORIGINE	COLD TIRE INFLATION PRESSURE PRESSION DE GONFLAGE À FROID	SEE OWNER'S MANUAL FOR ADDITIONAL INFORMATION CONSULTER LE GUIDE DU PROPRIÉTAIRE POUR DE PLUS AMPLES RENSEIGNEMENTS
FRONT AVANT	P215/60R16	210 kPa, 30 PSI	
REAR ARRIÈRE	P215/60R16	210 kPa, 30 PSI	
SPARE SECOURS	T155/70D17	420 kPa, 60 PSI	

42661-06483 6M

Tire Information Label

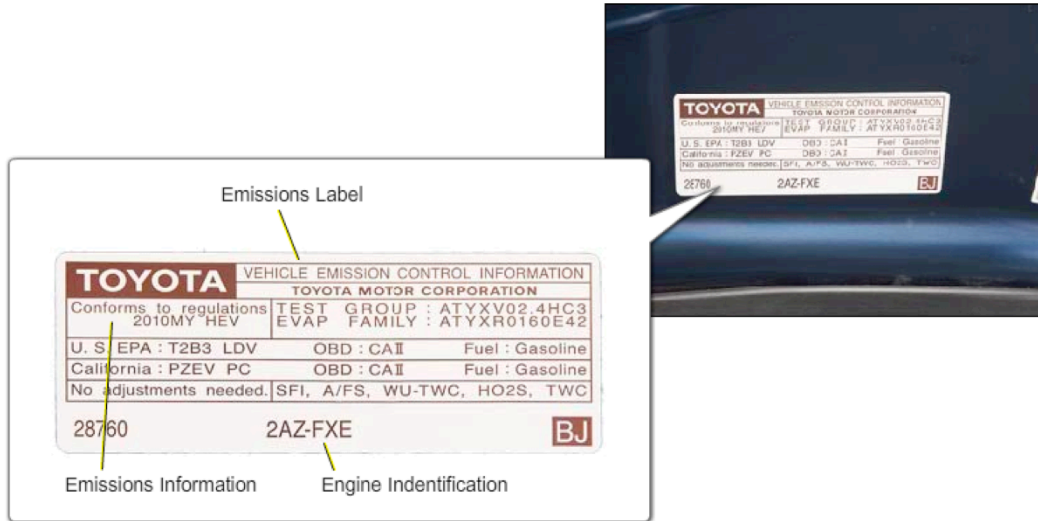
The tire information labels contain information on tires and load limits. This label indicates:

- Recommended tire size
- Recommended tire inflation pressure
- Vehicle capacity weight –the maximum occupant and cargo weight a vehicle is designed to carry

The tire information label is located on the driver's door B-pillar.

Vehicle Emissions Label

Emissions information is on the Vehicle Emissions Control Information Label found on the underside of the hood.



Vehicle Emissions Label

The Environmental Protection Agency requires all vehicles have a Vehicle Emissions Control Information label in the engine compartment. The information on this label includes model year, certification standards, engine family, engine size, engine tune up adjustment and specifications, and applicable emission control components or systems.

Vehicle Inquiry

Vehicle Identification Number Search

Enter a 17 Digit VIN below to search for applicable information:

VIN:

Vehicle Information

Division: TOYOTA Model: Camry Grade: SE Model Year: 2007

Drive Type: 2WD Body Type: 4Dr. Sedan Engine Family: V6 - 2GR-FE Transmission: 6AT

Date of First Use: 02/17/2007 Line Off Date: 01/05/2007 Plant Code: U - GEORGETOWN PLANT - TMMK

VIN: 4T1-BK46K-17U535887 Standard Equipment: [Click here to display](#)

Exterior Color: 01G3, MAGNETIC GRAY METALLIC Interior Color: **15, DARK CHARCOAL Interior Trim Color: **, * Interior Fabric: *, *

Accessories:

AS : 17" Aluminum Alloy Wheels w/P215/55R17 C1 : Cargo Mat C4 : Carpeted Floor Mats CF : Carpet/Trunk Mat Set E1 : JBL Premium 6 Disc In-dash CD Changer/ FE : 50 State Emissions P7 : XM Satellite Radio Kit QC : Sport Leather Package: Leather Package RF : Color-Keyed Rear Spoiler SC : Upgrade 18" TRD Camry 10 Spoke Alloy SR : Moonroof Package: Power Tilt/Slide

Vehicle Service History

Warranty Filter: All Expand All [+]

Date	Source	Mileage	Dealer	RO Number	Claim #	Pay Type
08/09/2007	Warranty	8949	41043		935644	WARRANTY PAY
Condition Desc: R&R SHIFTER HOUSING ASSY TSB NV005-07						
Date	Source	Mileage	Dealer	RO Number	Claim #	Pay Type
05/01/2007	Warranty	4312	41043		926380	WARRANTY PAY

Vehicle Inquiry

On the Vehicle Inquiry tab on TIS, typing in the VIN retrieves specific information regarding that vehicle:

- Status of service campaigns
- Vehicle service history
- Warranty information
- DTC history
- Diagnostic report

NOTE

Not all of the information above is available for all vehicles. The tabs that appear can depend on model year.

Health Check

Health Check provides an overall view of vehicle status with the push of a button.

Health Check reports:

- Monitor Status
- DTCs
- DTC-related Service Bulletins
- Calibration Updates
- Service Campaigns

The screenshot shows the 'Health Check' window in the Techstream software. It displays vehicle information for a 2010 Camry 2GR-FE, including tire pressure and compensation pressure. The 'Health Check Results' table lists various systems and their status. Annotations include:

- Red links lead to more detailed information.** (Pointing to red text links like 'Engine', 'Cruise Control', etc.)
- Problem areas are highlighted in yellow.** (Pointing to the yellow background of the 'Engine' row)
- Update Results, Clear DTCs, DTC Time Stamp, Health Check Report** (Pointing to buttons at the bottom right)
- Campaign Available: YES** (Pointing to the 'Campaign Available' status)
- Required Campaigns** (Pointing to the 'Required Campaigns' button)

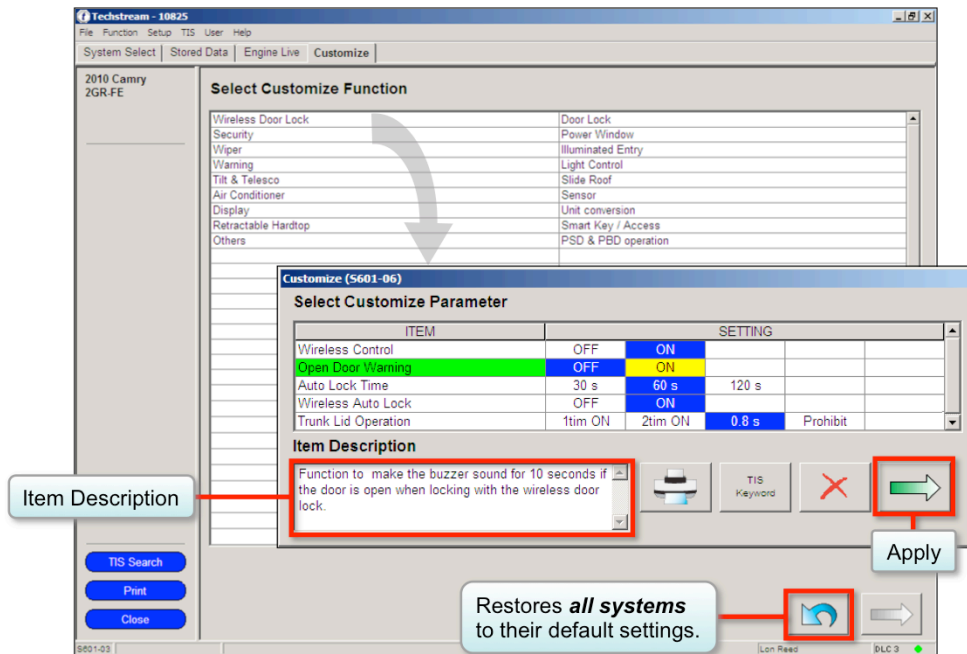
System	Monitor Status	DTC	Curr	Pend	Hist	Perm	SB	Calibration	Update
Engine	Com	P0102					No	333B8100	Yes
		P0441	X				No		
		P0455	X				No		
		B1421	X				No		
		B1424	X				No		

Health Check Health Check provides an overview of vehicle status and covers many areas of vehicle operation.

There are many ways to access Health Check data:

- Each Health Check is stored as a separate record. Once the file is saved, the Health Check records become a valuable tool for tracking vehicle condition over time.
- Collected Health Check results are also stored on TIS and are available under the Vehicle Inquiry tab.
- The 'Health Check Report' shows Health Check data in a simple customer-friendly format.

Customizable Settings



Customizable Settings

The Customize Settings function allows you to change CBEST and other programmable settings.

To customize a setting:

- Select a function to open the Select Customize Parameter dialog box.
- Select the new values you'd like to apply. The current settings are shown in blue, while the new settings you've selected are highlighted in yellow.
- Click the green "Apply" button to apply the selected changes.

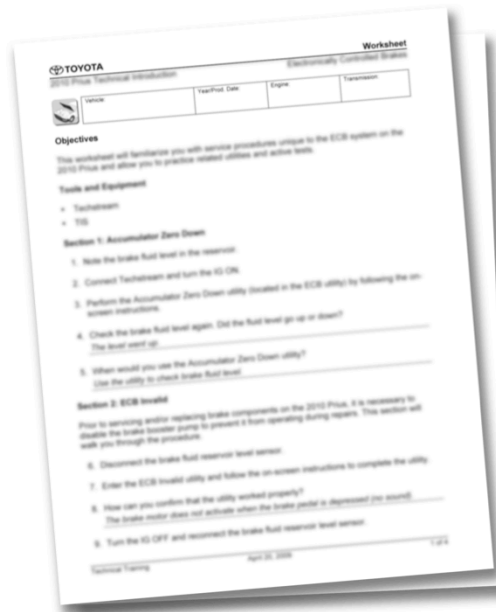
Some customized settings may have been changed by a technician with Techstream or on some vehicles by the customer through the multi-information display. If changes are made accidentally or **without the customer's knowledge**, these **changes may be perceived as a malfunction**.

Worksheet

Vehicle Service Information

In this worksheet you will:

- Locate appropriate resources for factory maintenance
- Review vehicle service history
- Perform vehicle health check
- Modify customizable vehicle settings



Use this space to write any questions you may have for your instructor.

NOTES:

This page is intentionally blank.