

LAMP-ASSEMBLY-LEFT FRONT C2

Harness Family: Dash

Color: BLACK

Gender: FEMALE

Part Number: 7283-8852-30

Part Description:

Connector No: D6605B

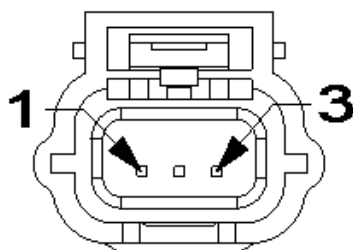
Option: Standard

Repair Kit Part Number: Not Available

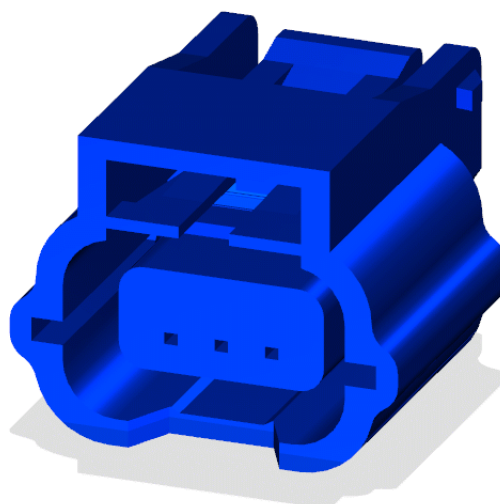
Cavity Count: 3

Available Views: [Location View](#)

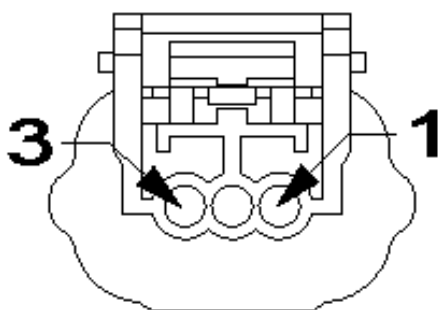
Mating Side:



Isometric View:



Wire Insertion Side:



NOTE: When connector cavities are identified as "NO CONNECT" in the following table, there may be "Dummy (blunt cut) wires" or Cavities may be "Open", "Plugged, or "Flashed over" depending on vehicle option content.

Pin	Circuit	Wire Color	Gauge/Size	Function	Option
1	F927	PK/YE	0.50	FUSED IGNITION	
2	L131	WH/GN	0.35	LEFT HEADLAMP LEVEL SENSOR SIGNAL	EXCEPT HEADLAMP LEVELING
2	L133	WH/YE	0.35	HEADLAMP LEVEL MOTOR SIGNAL	HEADLAMP LEVELING
3	Z905	BK	0.35	GROUND	