

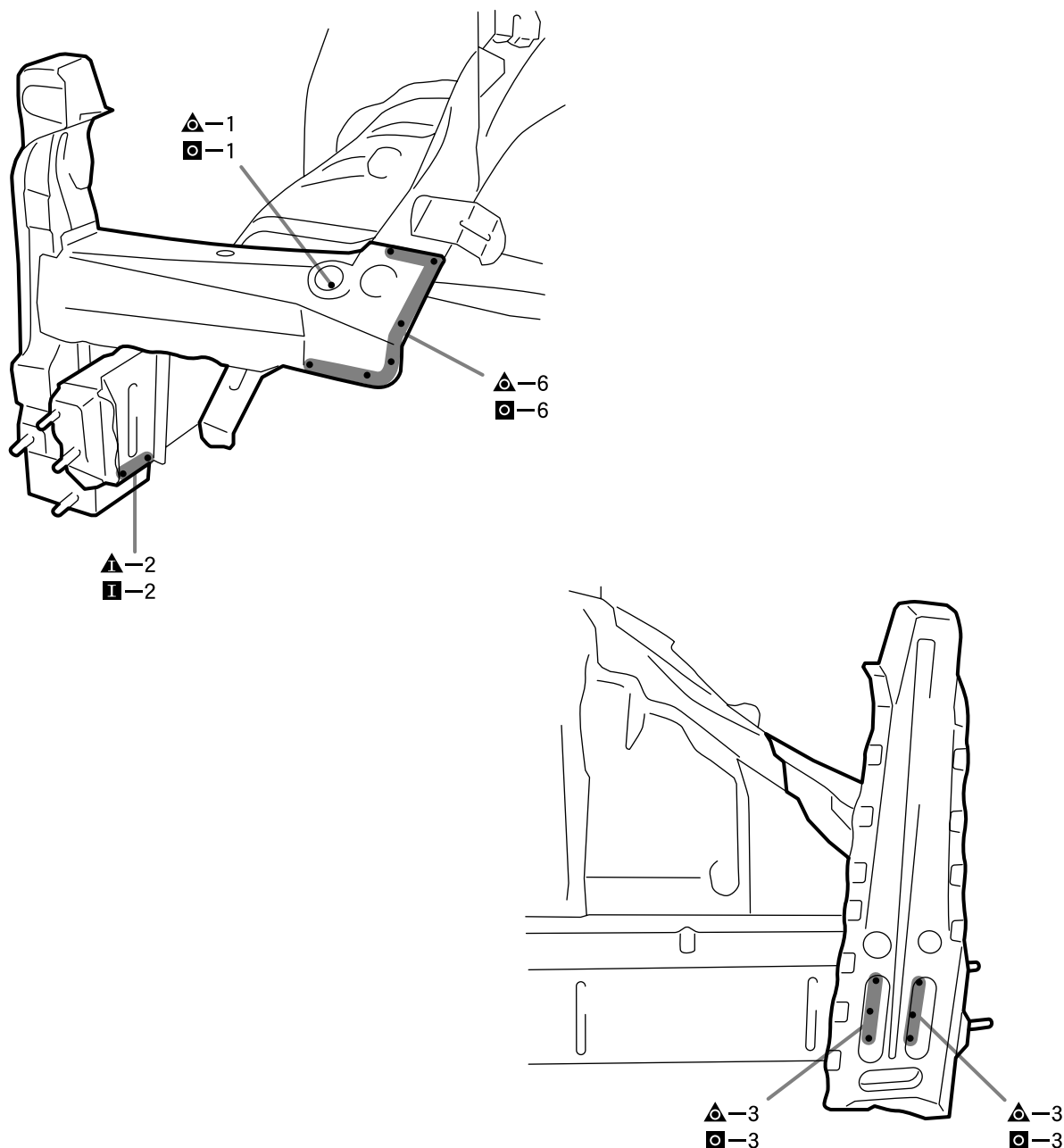
C REPLACEMENT PROCEDURE FOR BODY PANELS

RADIATOR SUPPORT -----	C - 1
REPLACEMENT -----	C - 1
FRONT FENDER MOUNTING	
BRACKET -----	C - 3
REPLACEMENT -----	C - 3
FRONT FENDER APRON -----	C - 4
REPLACEMENT -----	C - 4
FRONT SIDE MEMBER-----	C - 10
REPLACEMENT(CUTTING) -----	C - 10
REPLACEMENT -----	C - 14
FRONT APRON TO COWL SIDE	
MEMBER LOWER FRONT -----	C - 17
REPLACEMENT -----	C - 17
FRONT BODY PILLAR -----	C - 18
REPLACEMENT -----	C - 18
CENTER BODY PILLAR -----	C - 25
REPLACEMENT -----	C - 25
ROCKER PANEL OUTER -----	C - 29
REPLACEMENT(CUTTING) -----	C - 29
REPLACEMENT -----	C - 31
QUARTER PANEL -----	C - 33
REPLACEMENT -----	C - 33
QUARTER WHEEL HOUSE PANEL	
OUTER -----	C - 38
REPLACEMENT -----	C - 38
QUARTER PANEL EXTENSION REAR	
LOWER -----	C - 40
REPLACEMENT -----	C - 40
ROOF SIDE PANEL INNER LOWER -----	C - 43
REPLACEMENT -----	C - 43
BODY LOWER BACK PANEL -----	C - 46
REPLACEMENT(CUTTING) -----	C - 46
REPLACEMENT -----	C - 47
BODY LOWER BACK PANEL INNER -----	C - 49
REPLACEMENT(CUTTING) -----	C - 49
REPLACEMENT -----	C - 51
REAR FLOOR PAN -----	C - 52
REPLACEMENT(CUTTING) -----	C - 52
REAR FLOOR CROSS MEMBER	
REINFORCEMENT NO.4 -----	C - 58
REPLACEMENT -----	C - 58
REAR FLOOR CROSS MEMBER	
NO.3 -----	C - 59
REPLACEMENT -----	C - 59
REAR FLOOR SIDE MEMBER -----	C - 60
REPLACEMENT(CUTTING) -----	C - 60
ROOF PANEL -----	C - 61
REPLACEMENT -----	C - 61

1 RADIATOR SUPPORT

1-1 REPLACEMENT

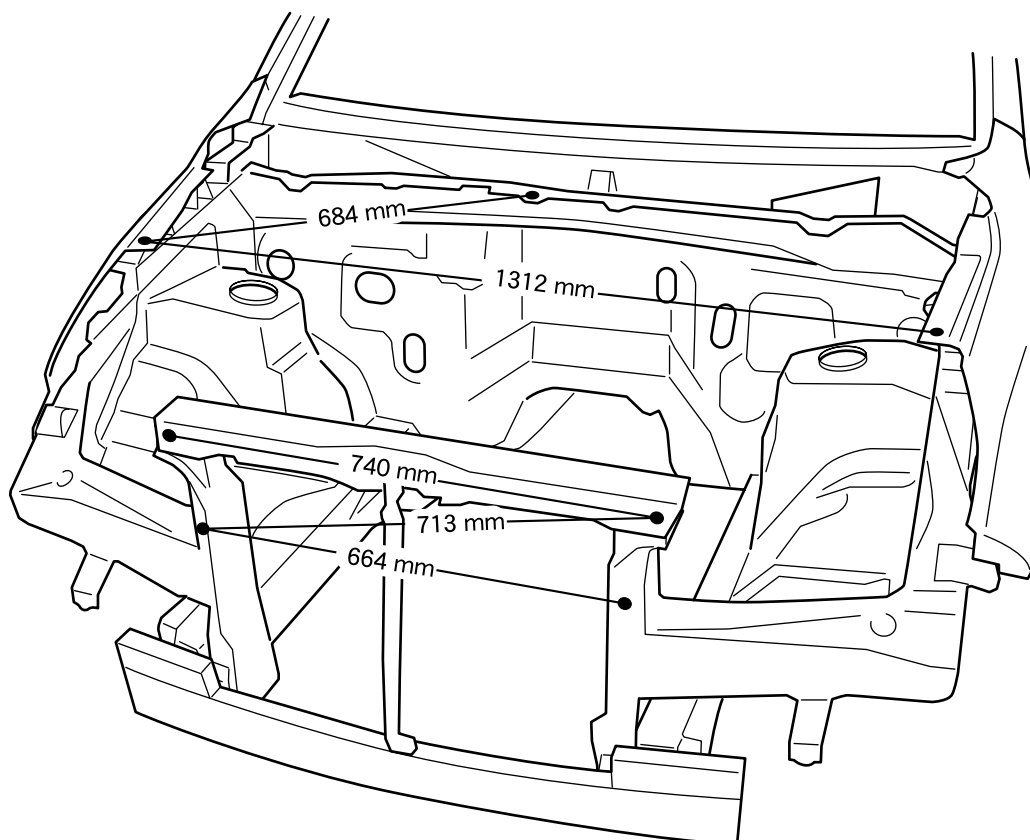
1-1-1 REMOVAL AND INSTALLATION



J11B9001IS40

1-1-2 INSTALLATION POINT

1. Inspect any adjacent fittings before welding any new parts, as it will affect the exterior appearance.
2. Tack new parts, then follow the body dimensions diagram and measure the dimensions for each part. (Refer to the dimensions diagram)



J11B9002IS40

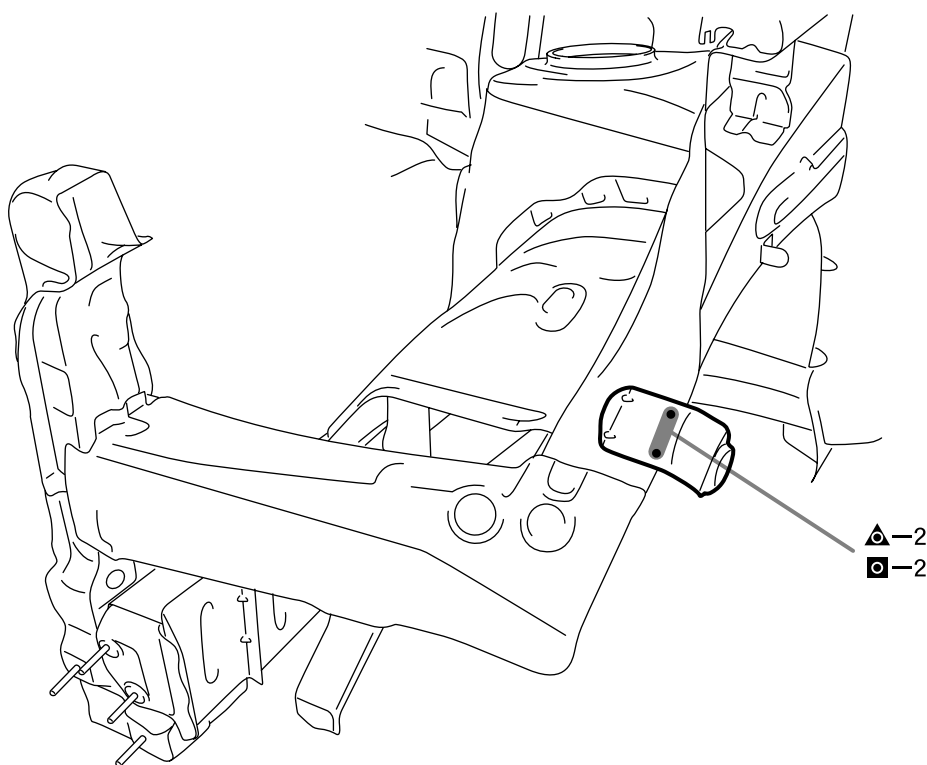
1-1-3 INSTALLATION POINT

- 1.Measure the dimensions before mounting a headlamp.
- 2.The entry number indicates the reference value.

2 FRONT FENDER MOUNTING BRACKET

2-1 REPLACEMENT

2-1-1 REMOVAL AND INSTALLATION



J11B9003IS40

2-1-2 INSTALLATION POINT

1. Inspect any adjacent fittings before welding any new parts, as it will affect the exterior appearance.
2. Tack new parts, then follow the body dimensions diagram and measure the dimensions for each part. (Refer to body dimensions)

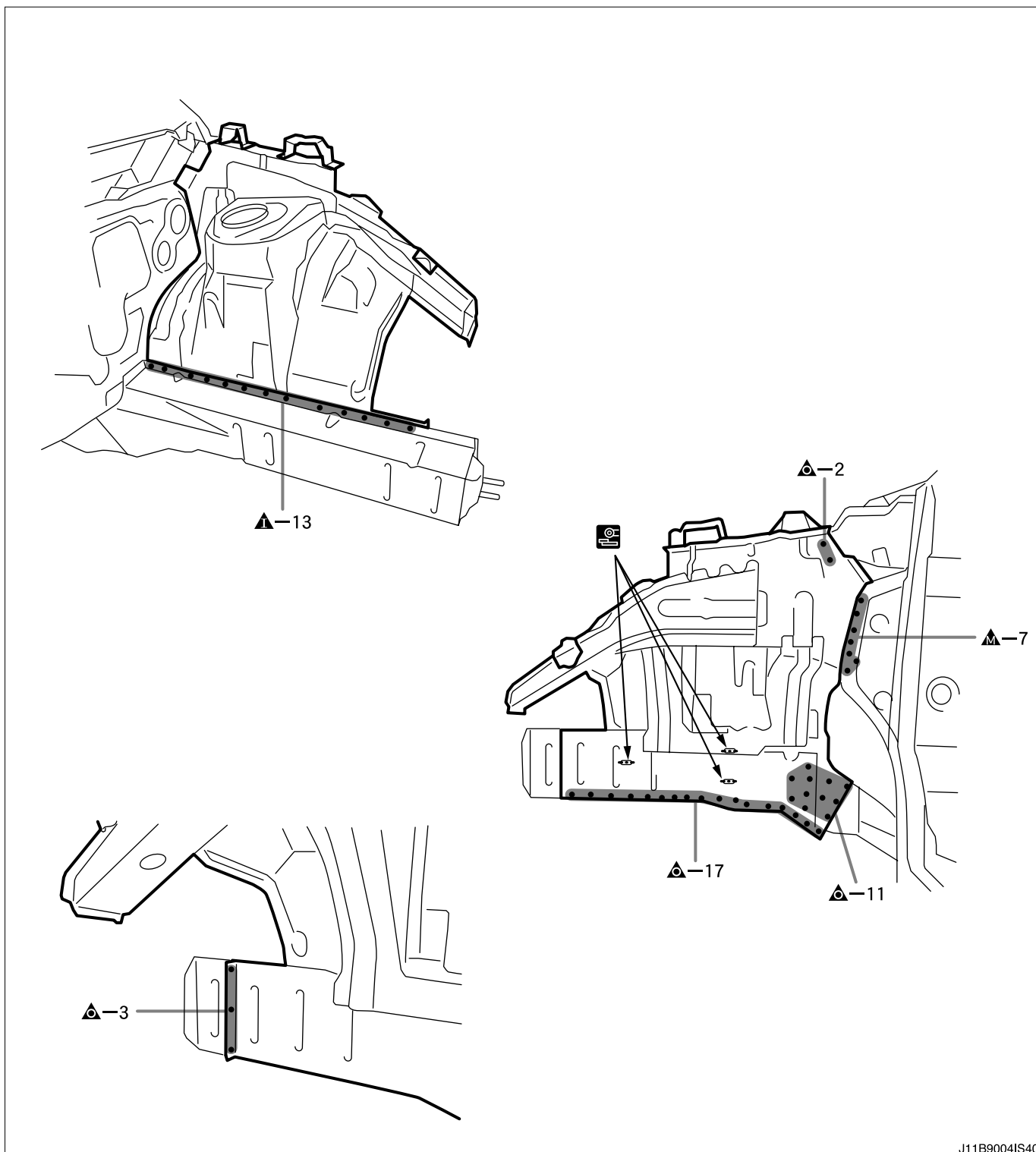
3 FRONT FENDER APRON

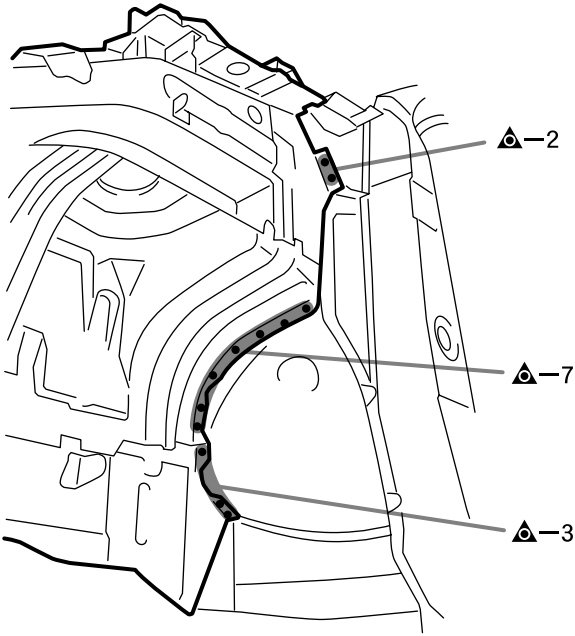
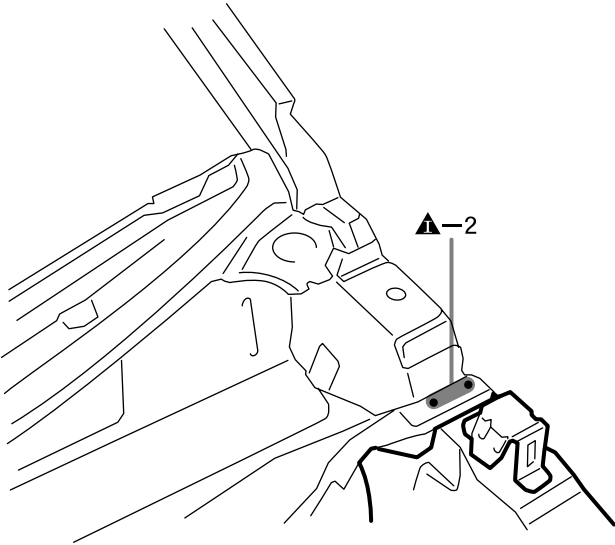
3-1 REPLACEMENT

3-1-1 REMOVAL CONDITIONS

- 1.Remove the part or component necessary to remove the radiator support.
- 2.Remove the necessary part or component of the front apron to cowl side member lower FR.

3-1-2 REMOVAL





[illegible]

3-1-4 INSTALLATION POINT

1. Inspect any adjacent fittings before welding any new parts, as it will affect the exterior appearance.
2. Tack new parts, then follow the body dimensions diagram and measure the dimensions for each part. (Refer to body dimensions)

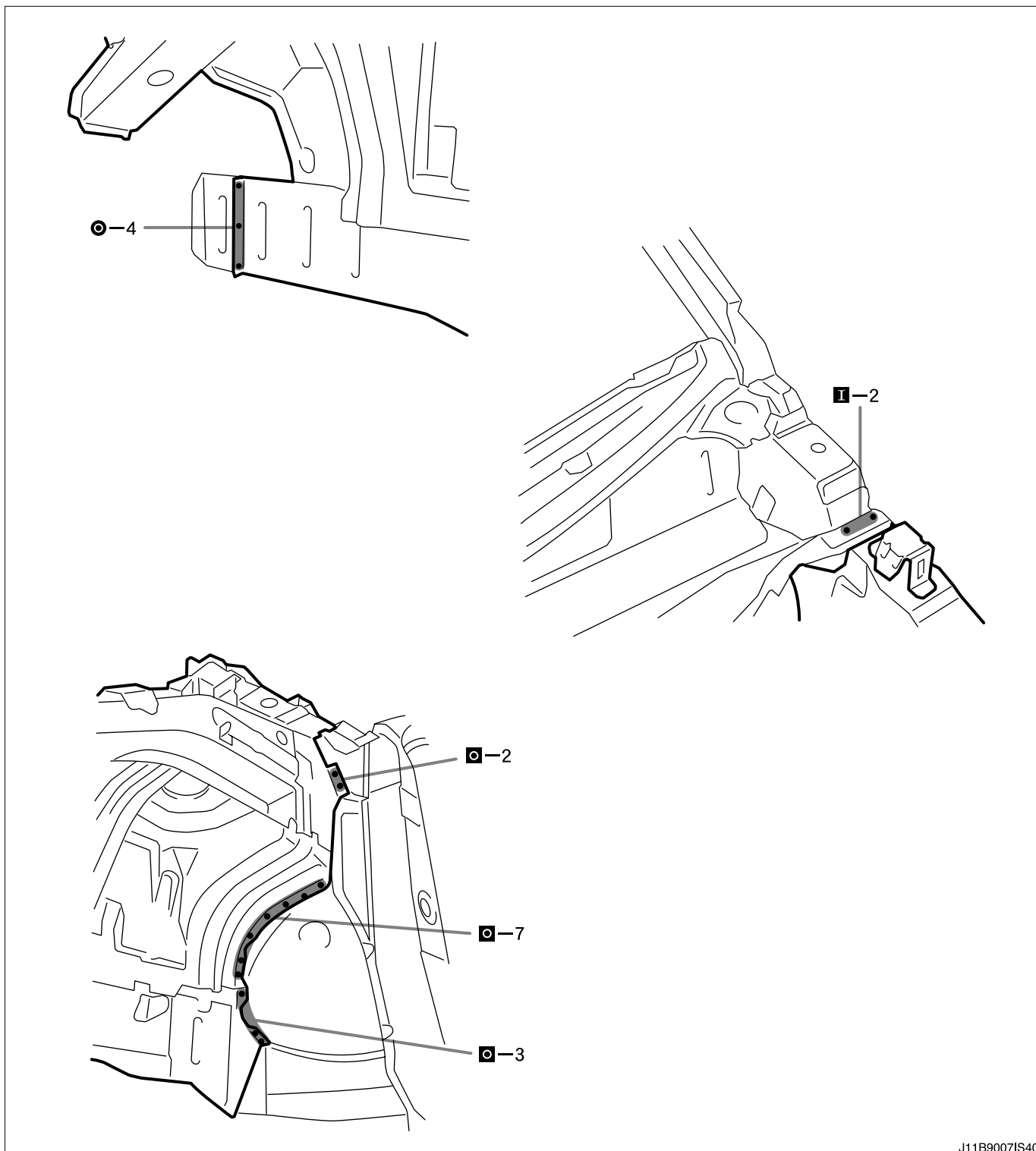
CAUTION

- For parts related to front wheel alignment, follow the body dimensions diagram and install correctly.

3. Apply body sealer before installing new parts.

CAUTION

- Apply the sealer evenly so that there are no seams.



J11B9007IS40

3-1-5 INSTALLATION POINT

1. Inspect any adjacent fittings before welding any new parts, as it will affect the exterior appearance.
2. Tack new parts, then follow the body dimensions diagram and measure the dimensions for each part. (Refer to body dimensions)

CAUTION

- For parts related to front wheel alignment, follow the body dimensions diagram and install correctly.

3. After installation, apply body sealer and undercoat to the relevant areas. (Refer to rust treatment)
4. For the welds on the closed section structure, after applying a topcoat, apply an anti-rust agent to the insides.

3-1-6 INSTALLATION CONDITIONS

1. Install the necessary part or component necessary of the front apron to cowl side member lower FR.
2. Install the necessary part or component of the radiator support.

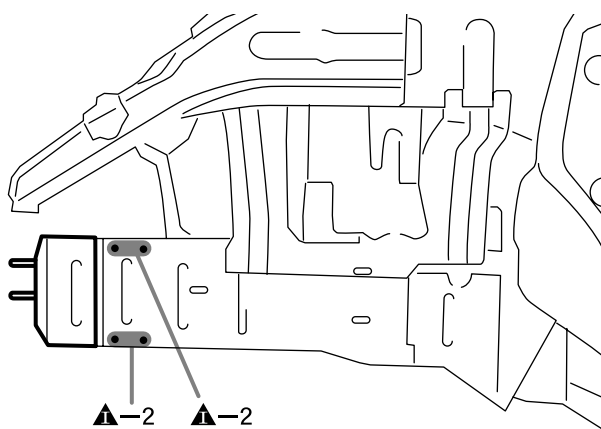
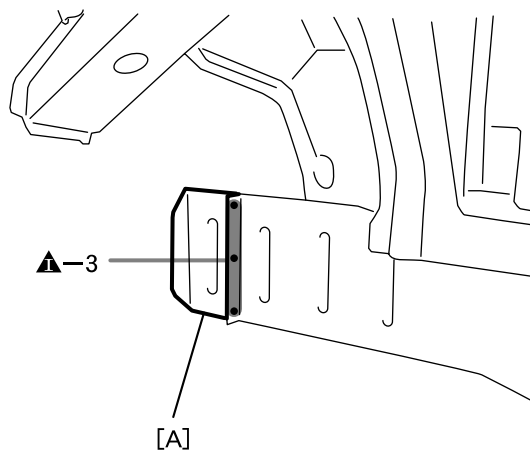
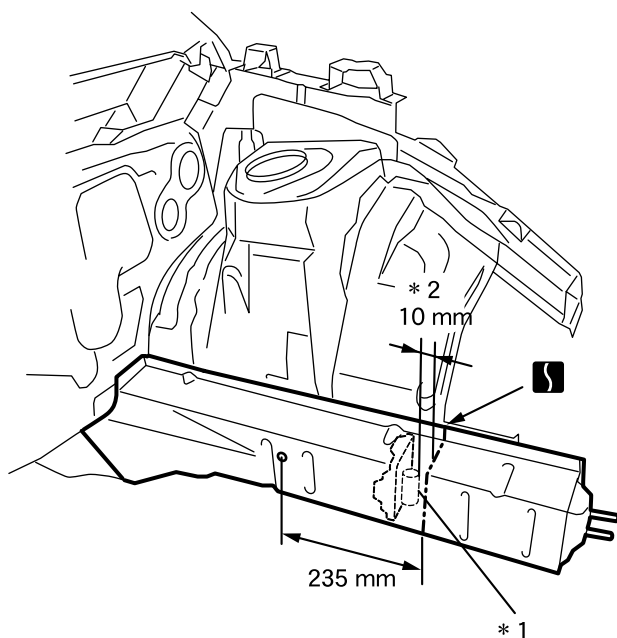
4 FRONT SIDE MEMBER

4-1 REPLACEMENT(CUTTING)

4-1-1 REMOVAL CONDITIONS

- 1.Remove the part or component necessary to remove the radiator support.

4-1-2 REMOVAL



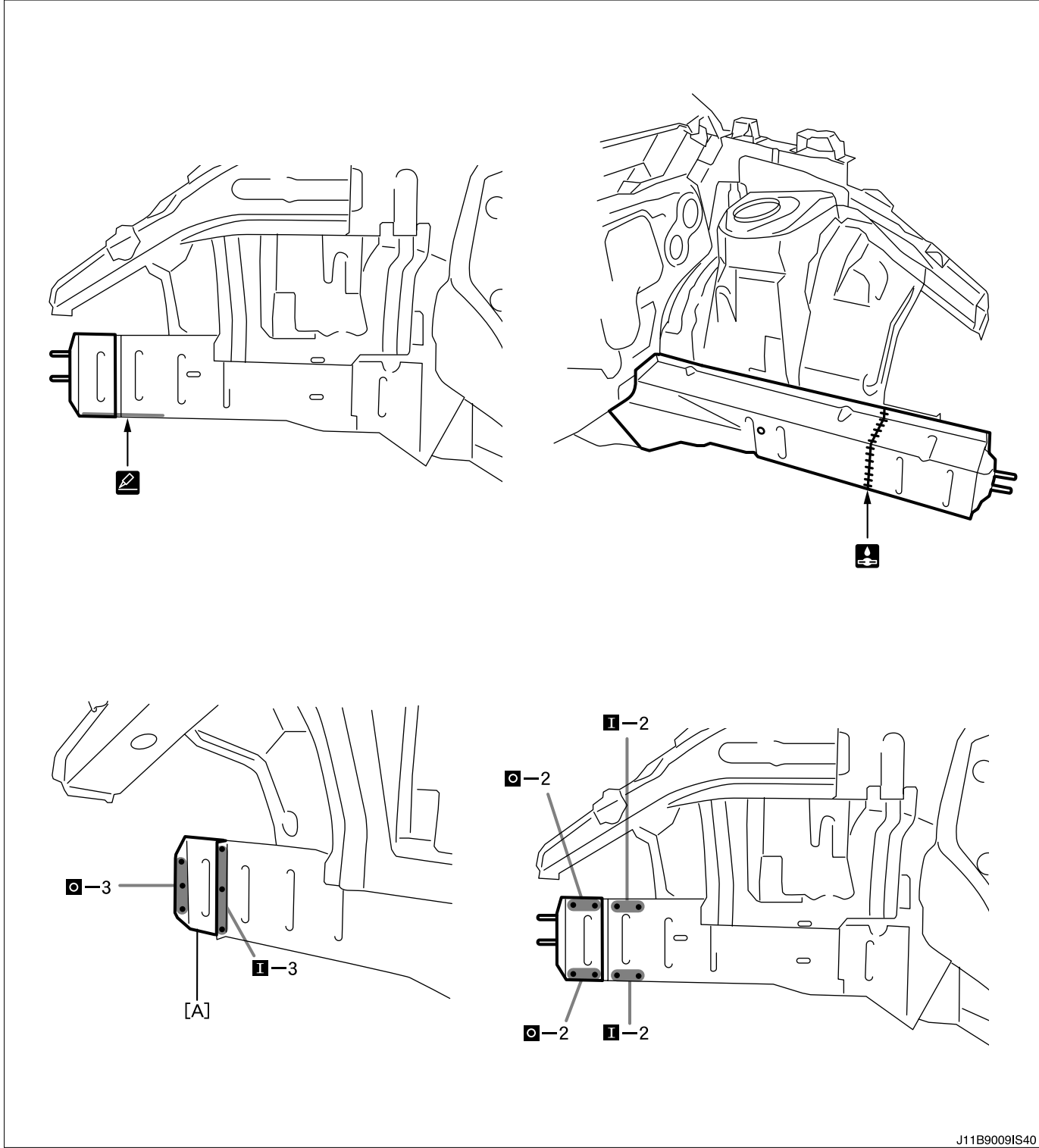
J11B9008IS40

Code	Part name
[A]	Front side member reinforcement No. 1

4-1-3 REMOVAL POINT

- 1.Remove front side member reinforcement No. 1 at the same time.
- 2.*1: Be careful of the internal reinforcement as you work.
- 3.*2: The entry number indicates the reference value.

4-1-4 INSTALLATION



J11B9009IS40

Code	Part name
[A]	Front side member reinforcement No. 1

4-1-5 INSTALLATION POINT

1. Tack new parts, then follow the body dimensions diagram and measure the dimensions for each part. (Refer to body dimensions)
2. Apply body sealer before installing new parts.

CAUTION

- Apply the sealer evenly so that there are no seams.

3. After installation, apply body sealer and undercoat to the relevant areas. (Refer to rust treatment)
4. For the welds on the closed section structure, after applying a topcoat, apply an anti-rust agent to the insides.

4-1-6 INSTALLATION CONDITIONS

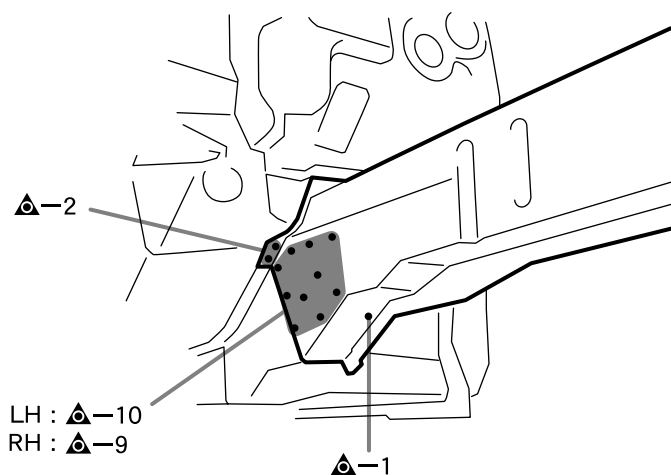
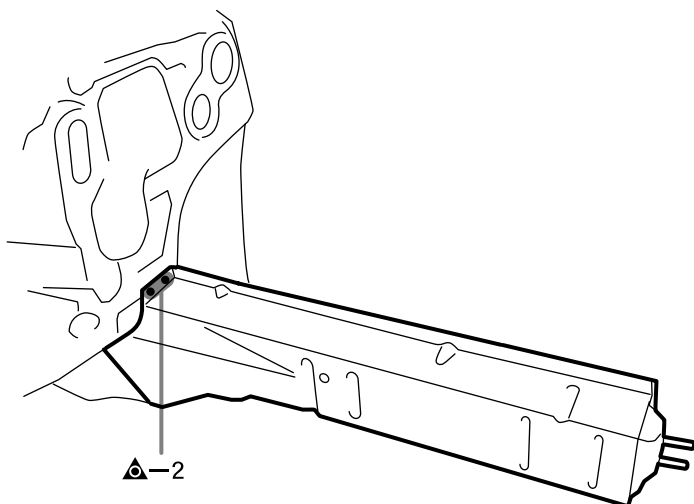
1. Install the radiator support.

4-2 REPLACEMENT

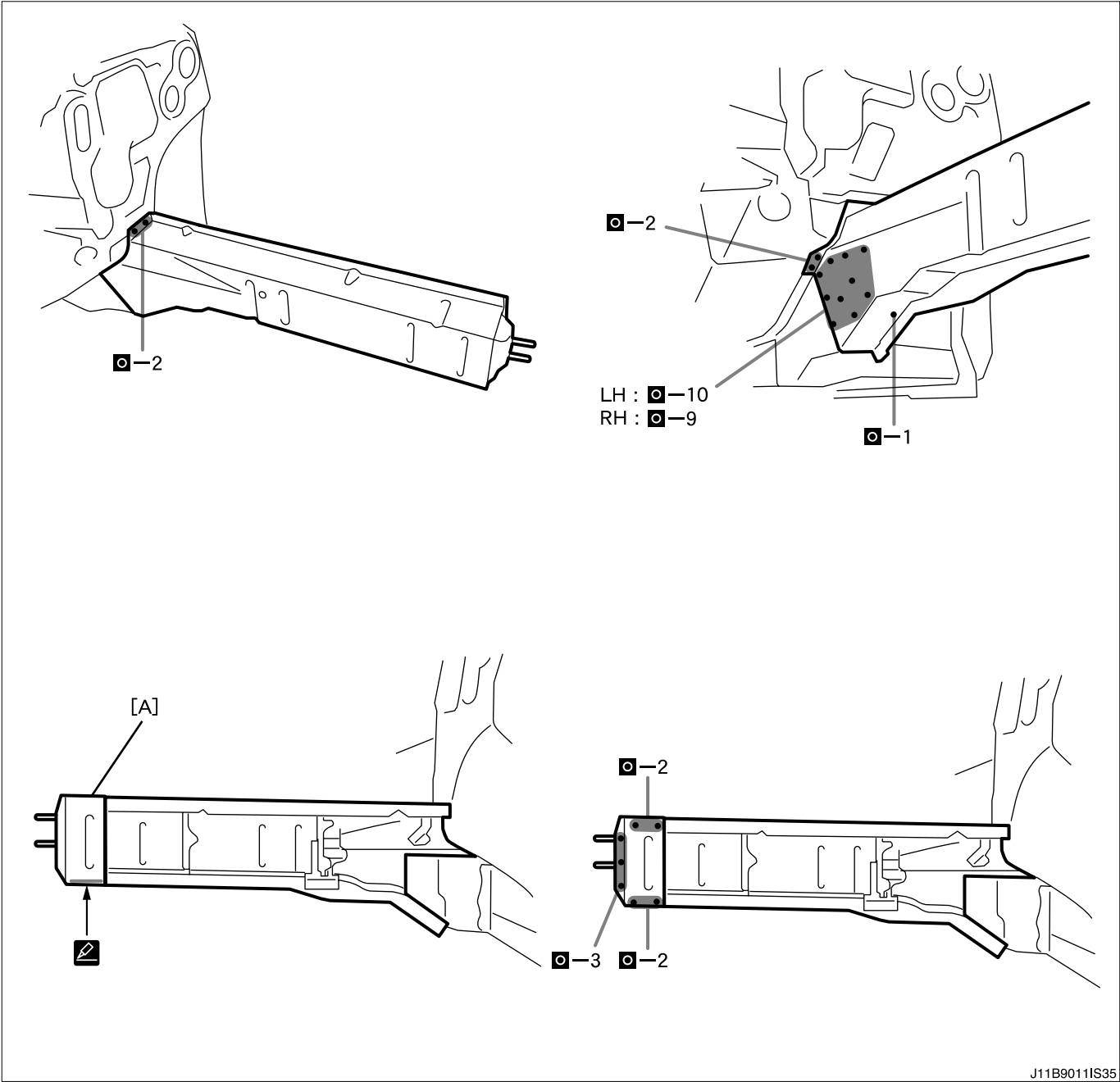
4-2-1 REMOVAL CONDITIONS

- 1.Remove the necessary part or component of the front fender apron.

4-2-2 REMOVAL



4-2-3 INSTALLATION



Code	Part name
[A]	Front side member reinforcement No. 1

4-2-4 INSTALLATION POINT

1.Tack new parts, then follow the body dimensions diagram and measure the dimensions for each part.(Refer to body dimensions)

CAUTION

- For parts related to front wheel alignment, follow the body dimensions diagram and install correctly.

2.Apply body sealer before installing new parts.

CAUTION

- Apply the sealer evenly so that there are no seams.

3.After installation, apply body sealer and undercoat to the relevant areas.(Refer to rust treatment)

4.For the welds on the closed section structure, after applying a topcoat, apply an anti-rust agent to the insides.

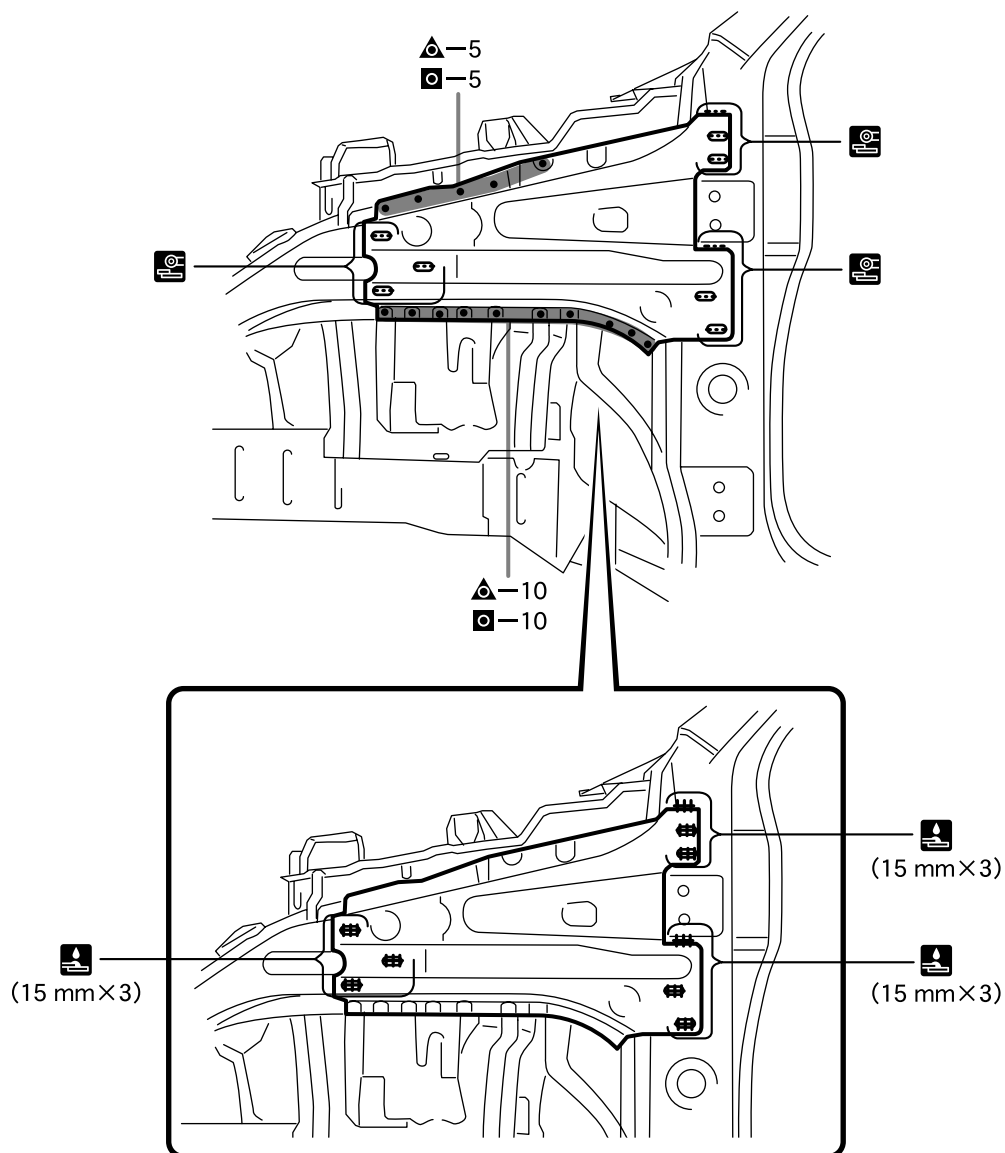
4-2-5 INSTALLATION CONDITIONS

1.Install the front fender apron.

5 FRONT APRON TO COWL SIDE MEMBER LOWER FRONT

5-1 REPLACEMENT

5-1-1 REMOVAL AND INSTALLATION



J11B9012IS40

5-1-2 INSTALLATION POINT

1. For the welds on the closed section structure, after applying a topcoat, apply an anti-rust agent to the insides.

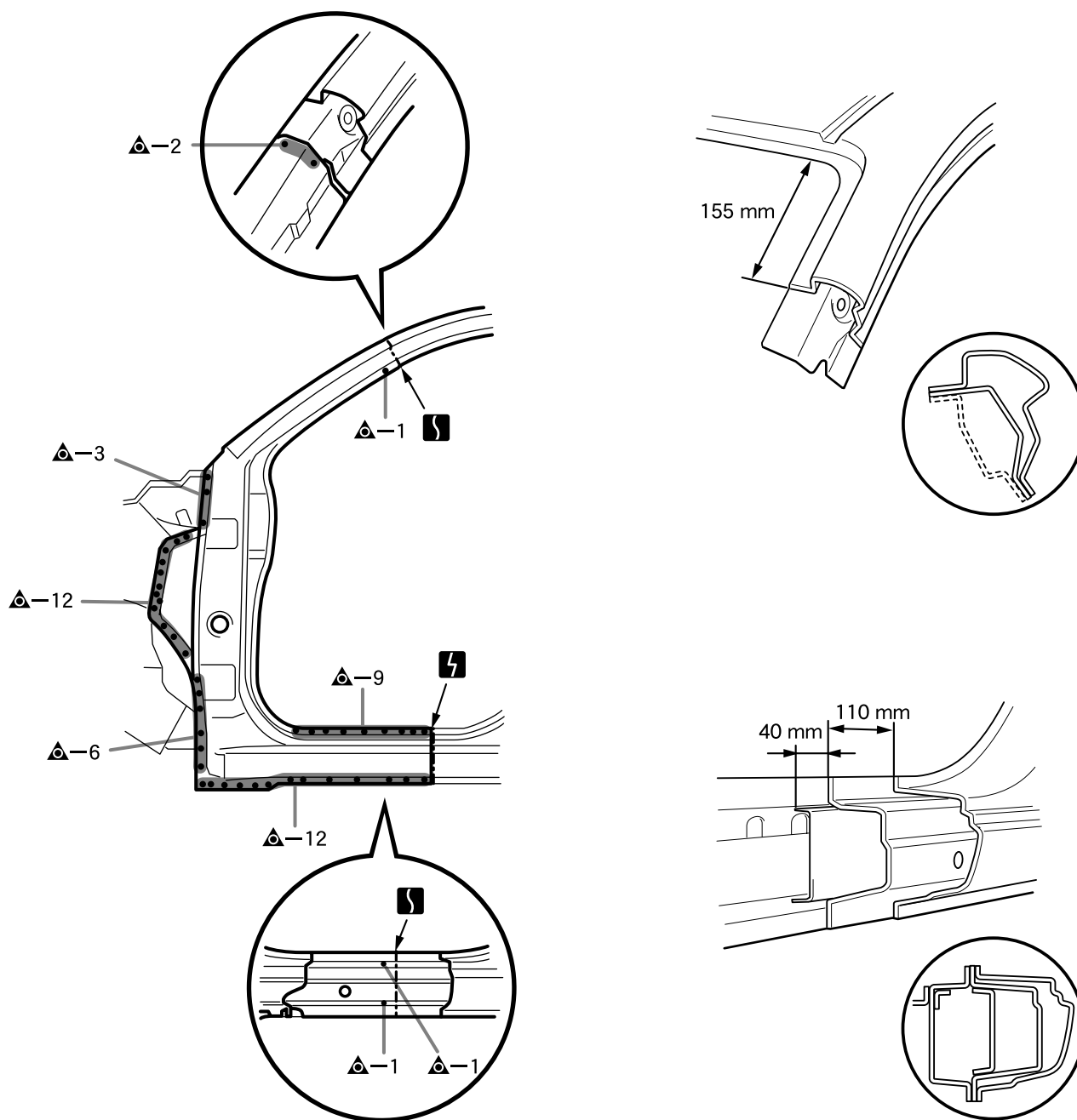
6 FRONT BODY PILLAR

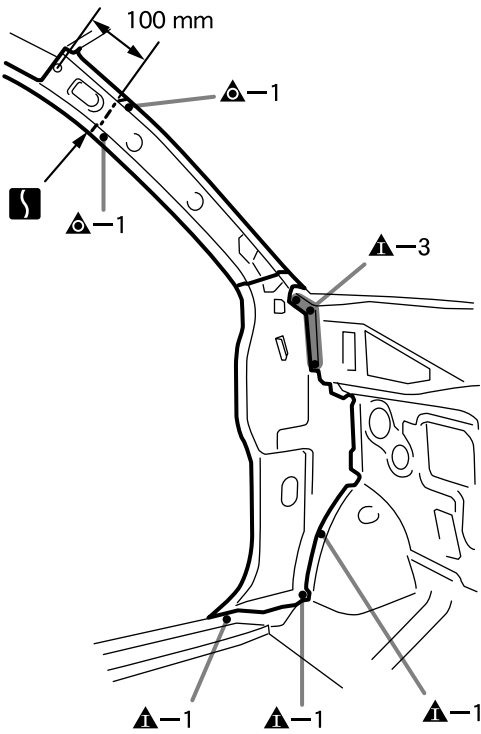
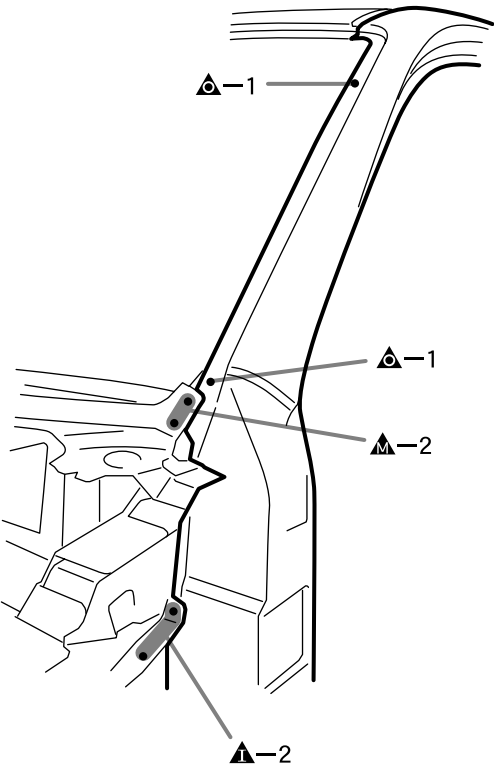
6-1 REPLACEMENT

6-1-1 REMOVAL CONDITIONS

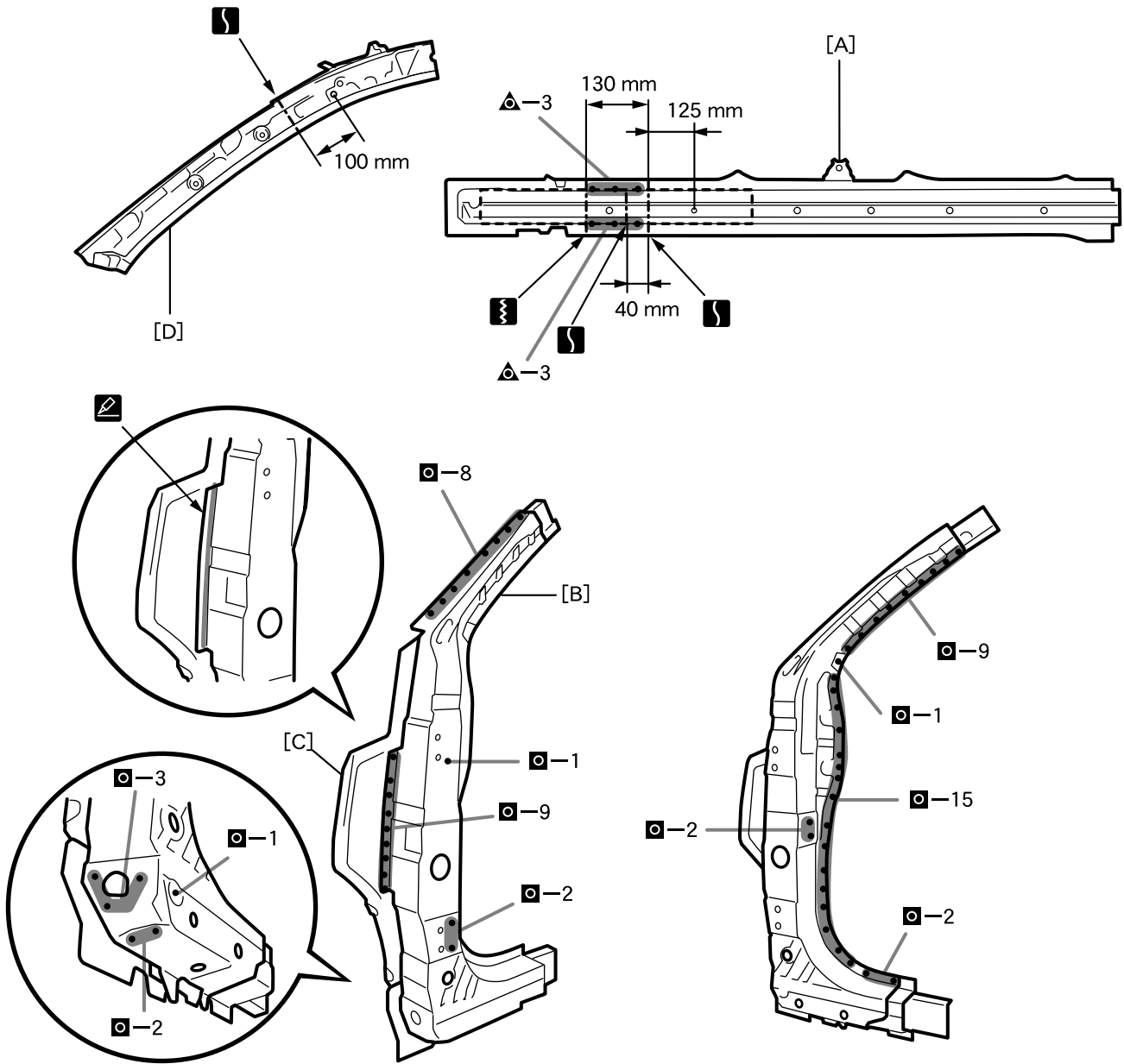
1.Remove the part or component necessary of the front apron to cowl side member lower FR.

6-1-2 REMOVAL





6-1-3 INSTALLATION



J11B9015IS40

Code	Part name
[A]	Rocker reinforcement outer
[B]	Front pillar reinforcement lower
[C]	Front pillar inner
[D]	Front pillar

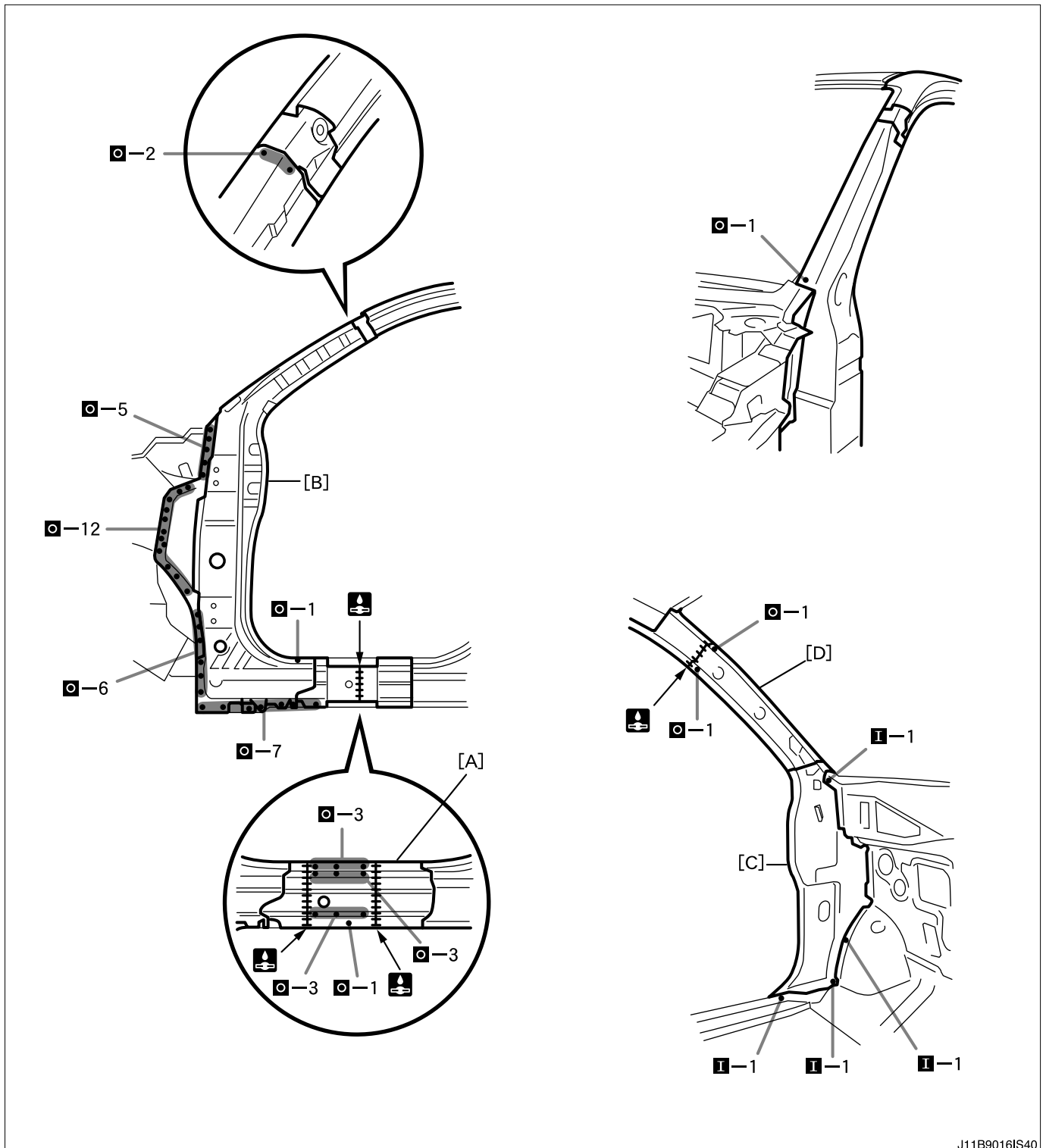
6-1-4 INSTALLATION POINT

1. Apply body sealer before installing new parts.

CAUTION

- Apply the sealer evenly so that there are no seams.

2. Before tacking new parts, reference-point weld the rocker reinforcement outer, front pillar reinforcement lower, front pillar inner and front pillar.

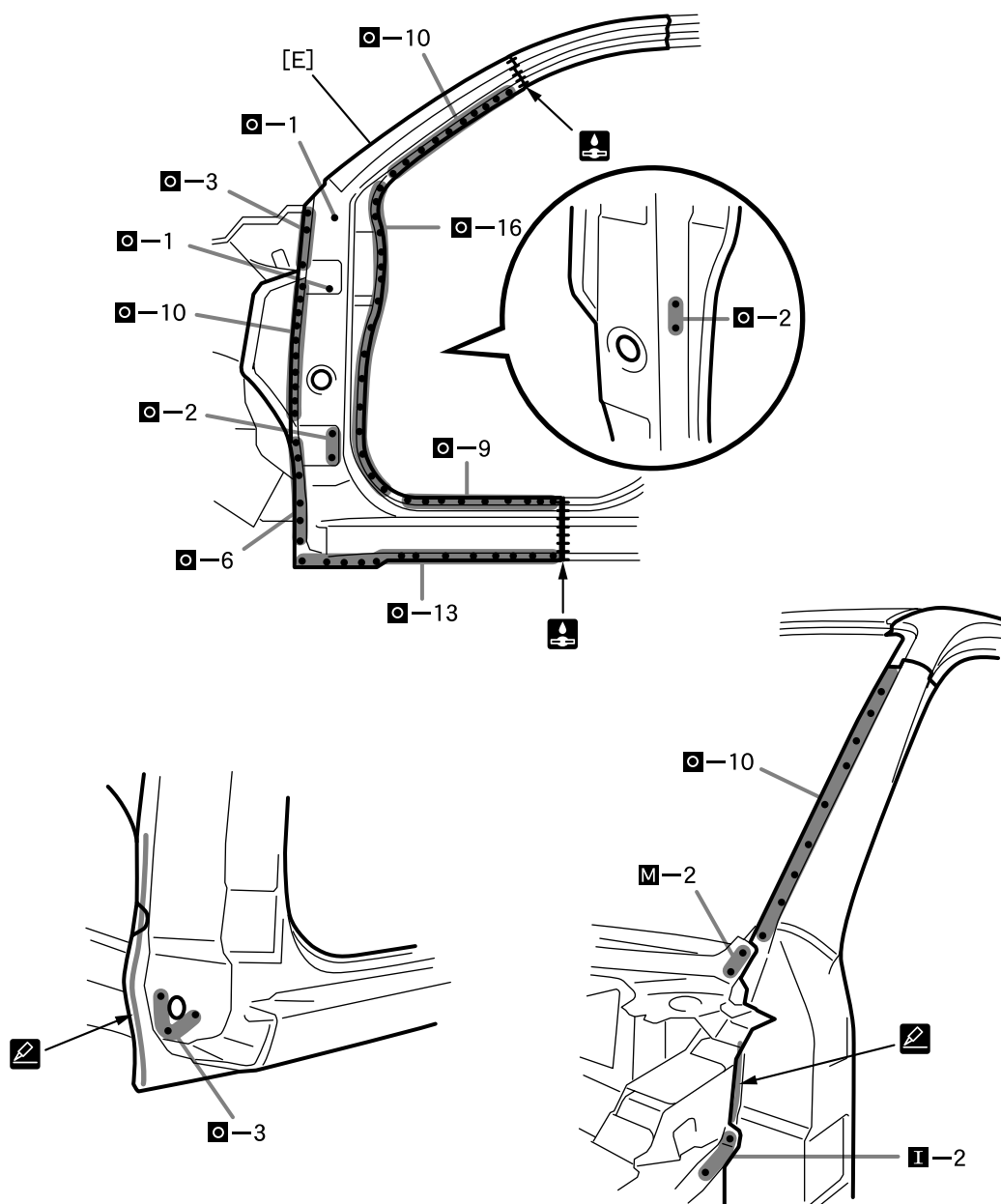


J11B9016IS40

Code	Part name
[A]	Rocker reinforcement outer
[B]	Front pillar reinforcement lower
[C]	Front pillar inner
[D]	Front pillar

6-1-5 INSTALLATION POINT

1. Inspect any adjacent fittings before welding any new parts, as it will affect the exterior appearance.
2. Tack new parts, then follow the body dimensions diagram and measure the dimensions for each part. (Refer to body dimensions)
3. After welding the rocker reinforcement outer, front pillar reinforcement lower, and front pillar inner to the vehicle, install the front pillar upper outer.



J11B9017IS35

Code	Part name
[E]	Front pillar upper outer

6-1-6 INSTALLATION POINT

1. Inspect any adjacent fittings before welding any new parts, as it will affect the exterior appearance.
2. Tack new parts, then follow the body dimensions diagram and measure the dimensions for each part. (Refer to body dimensions)
3. Apply body sealer before tacking new parts.

CAUTION

- Apply the sealer evenly so that there are no seams.

4. After installation, fill in the relevant areas with urethane foam. (Refer to the data at the end of this volume)
5. After installation, apply body sealer and undercoat to the relevant areas. (Refer to rust treatment)
6. For the welds on the closed section structure, after applying a topcoat, apply an anti-rust agent to the insides.

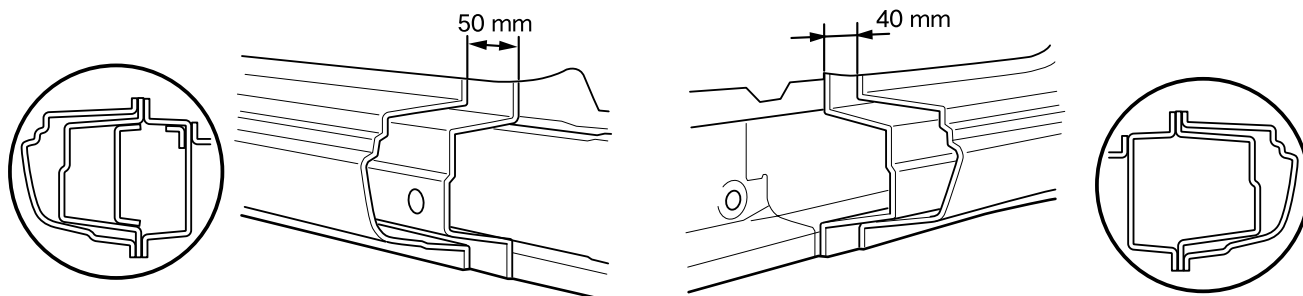
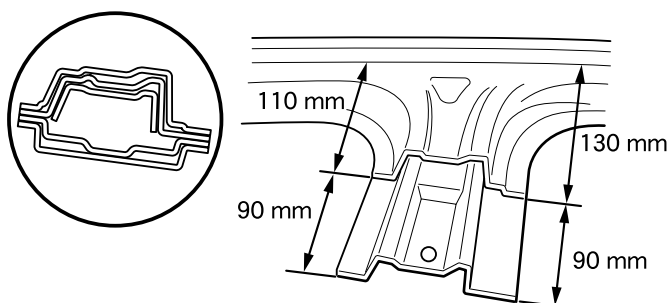
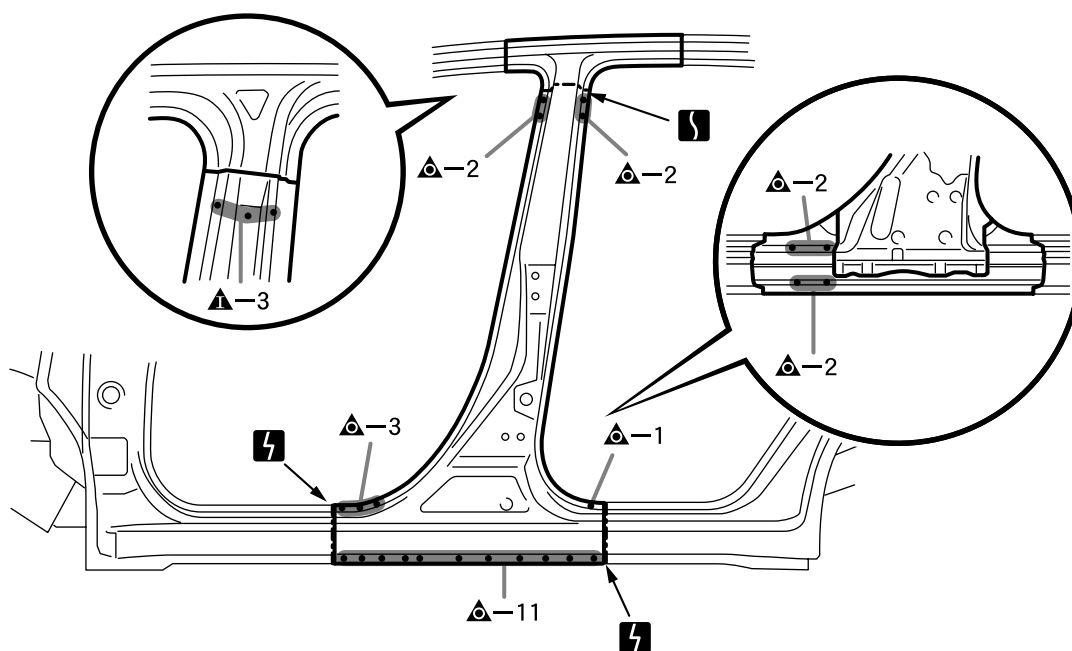
6-1-7 INSTALLATION CONDITIONS

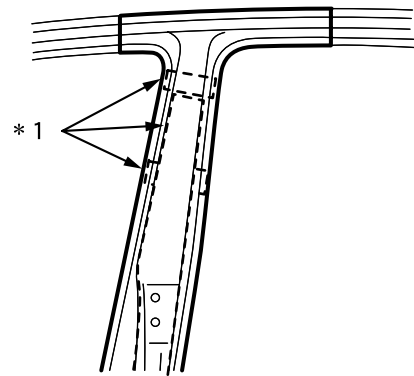
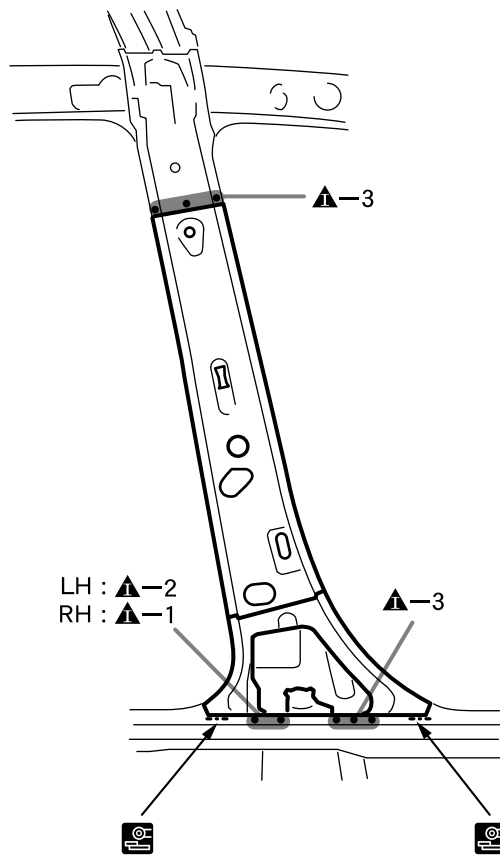
1. Install the front apron to cowl side member lower FR.

7 CENTER BODY PILLAR

7-1 REPLACEMENT

7-1-1 REMOVAL



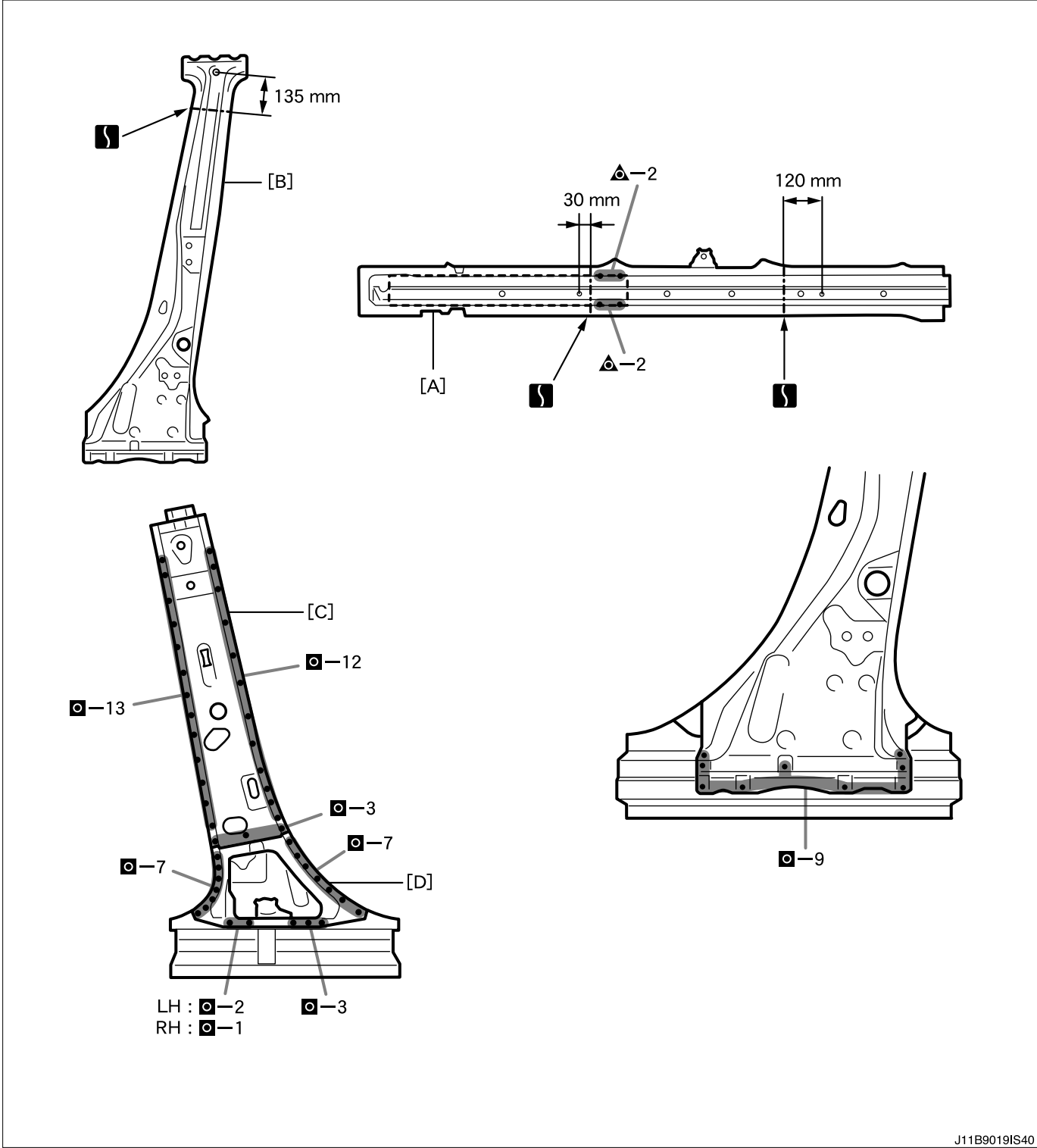


J11B9048IS40

7-1-2 REMOVAL POINT

1.*1: Be careful of the internal reinforcement as you work.

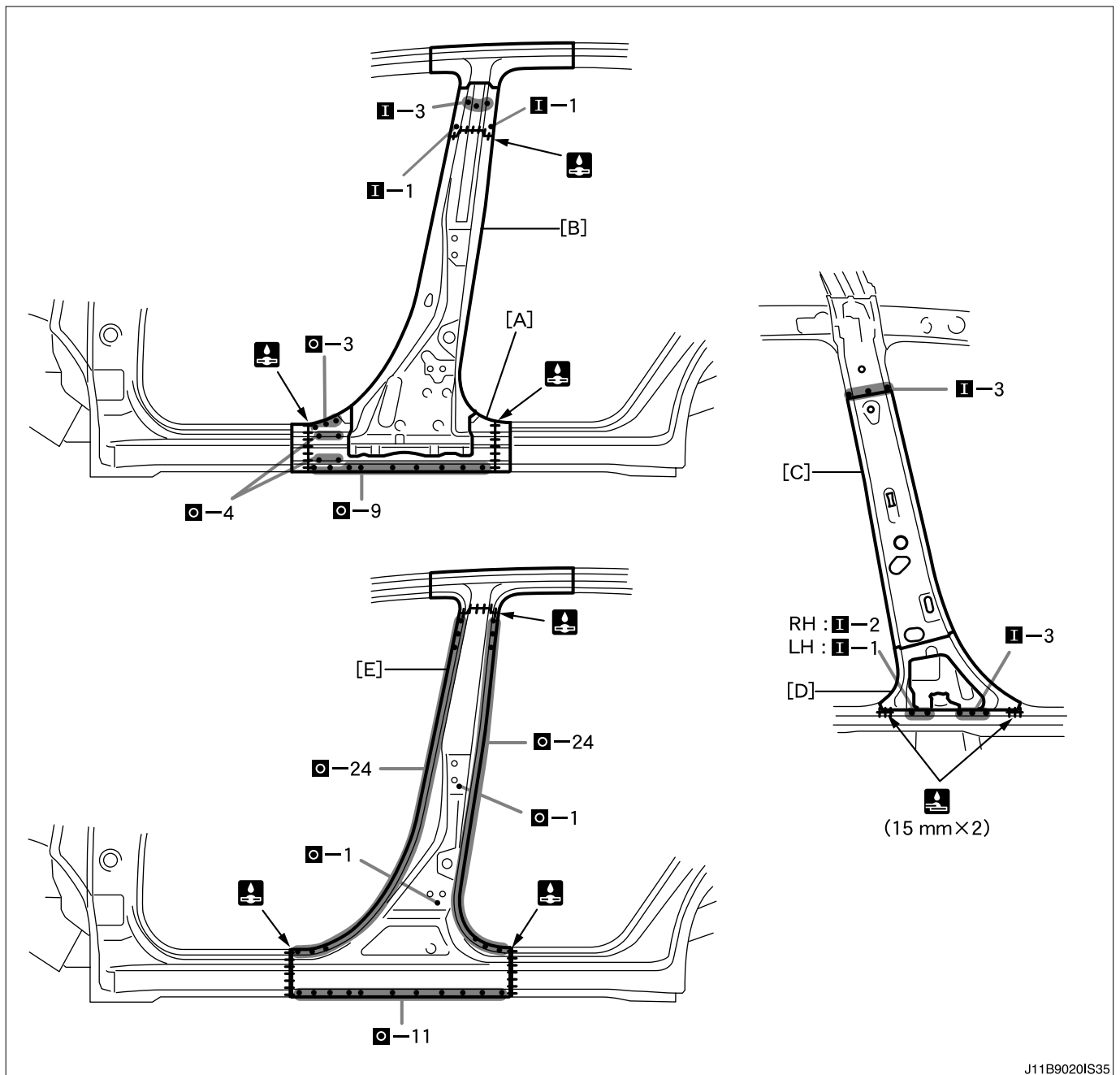
7-1-3 INSTALLATION



Code	Part name
[A]	Rocker reinforcement outer
[B]	Center body pillar reinforcement
[C]	Center pillar inner
[D]	Rocker panel reinforcement

7-1-4 INSTALLATION POINT

1. Before installing new parts, reference-point weld the rocker reinforcement outer, center body pillar reinforcement, center pillar inner, and rocker panel reinforcement.



J11B9020IS35

Code	Part name
[A]	Rocker reinforcement outer
[B]	Center body pillar reinforcement
[C]	Center pillar inner
[D]	Rocker panel reinforcement
[E]	Center pillar upper

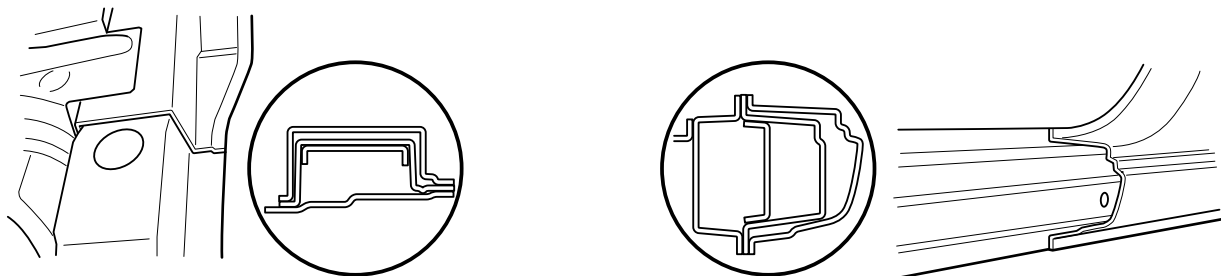
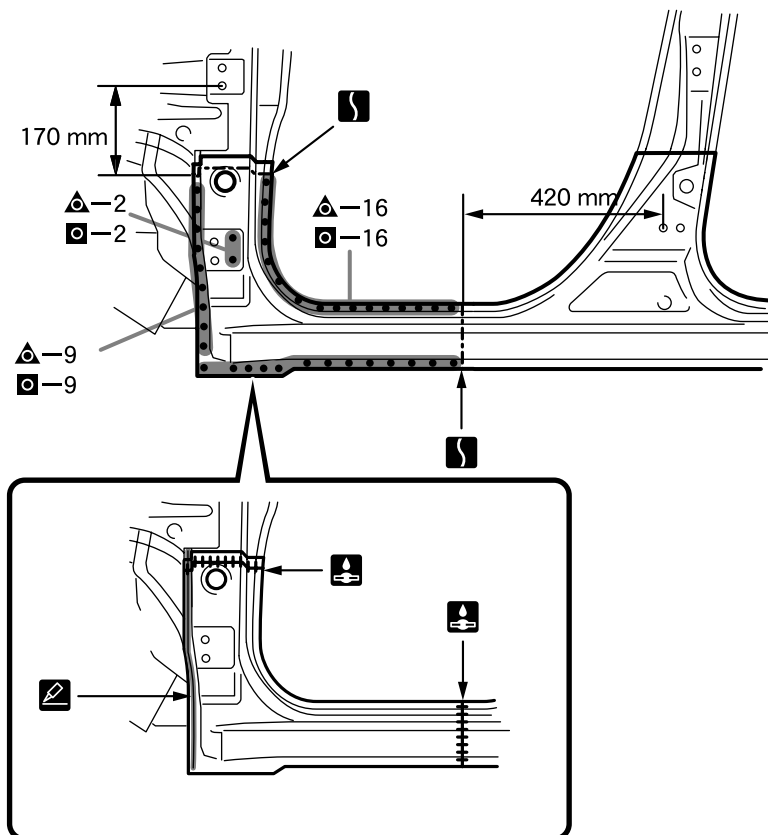
7-1-5 INSTALLATION POINT

1. Inspect any adjacent fittings before welding any new parts, as it will affect the exterior appearance.
2. Tack new parts, then follow the body dimensions diagram and measure the dimensions for each part. (Refer to body dimensions)
3. After welding the rocker reinforcement outer, center body pillar reinforcement lower, center pillar inner, and rocker panel reinforcement to the vehicle, install the center pillar outer.
4. After installation, apply undercoat to the relevant areas. (Refer to rust treatment)
5. For the welds on the closed section structure, after applying a topcoat, apply an anti-rust agent to the insides.

8 ROCKER PANEL OUTER

8-1 REPLACEMENT(CUTTING)

8-1-1 REMOVAL AND INSTALLATION



8-1-2 INSTALLATION POINT

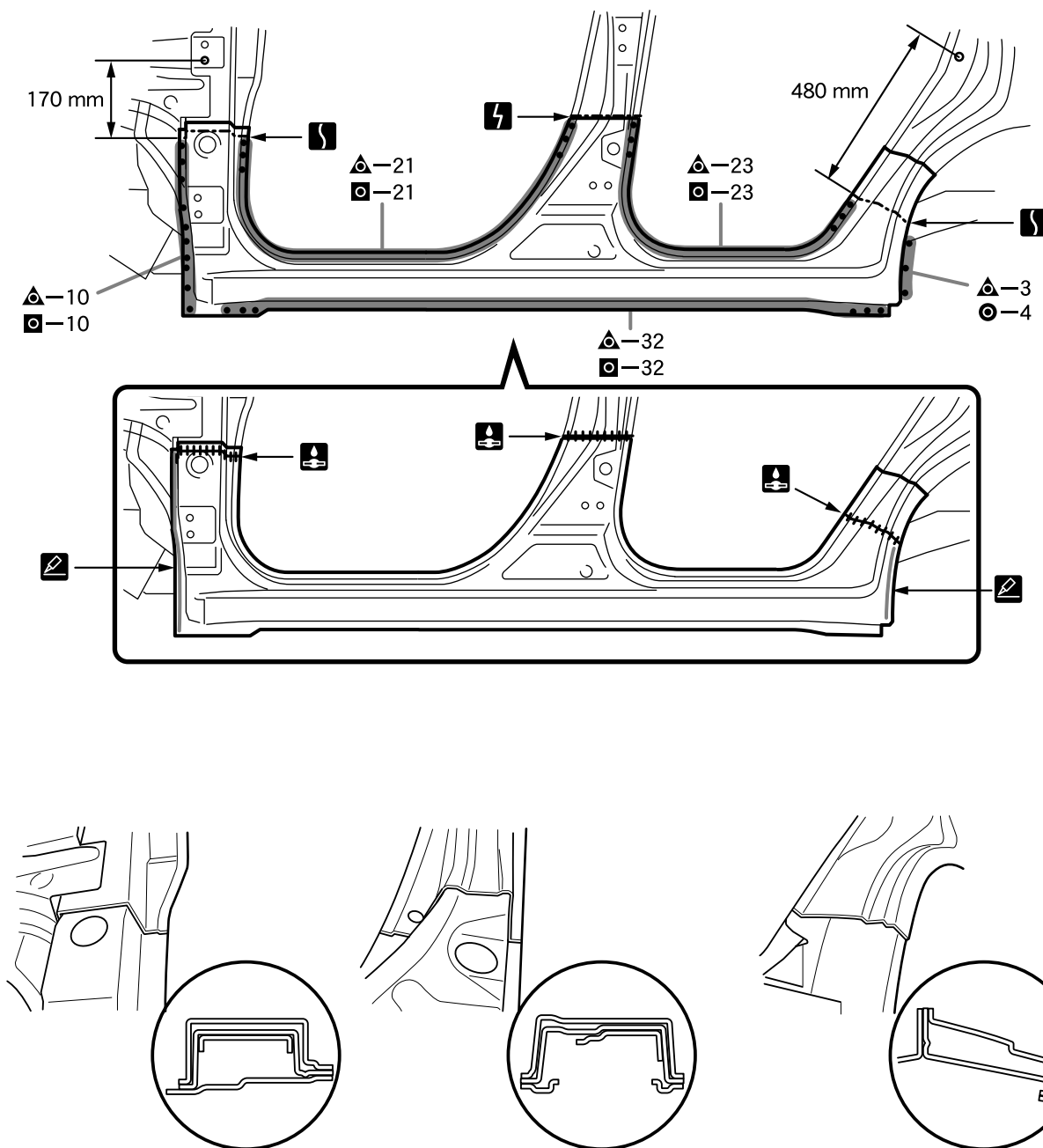
1. Inspect any adjacent fittings before welding any new parts, as it will affect the exterior appearance.
2. Tack new parts, then follow the body dimensions diagram and measure the dimensions for each part. (Refer to body dimensions)
3. After installation, apply undercoat to the relevant areas. (Refer to rust treatment)
4. For the welds on the closed section structure, after applying a topcoat, apply an anti-rust agent to the insides.
5. Apply body sealer before tacking new parts.

CAUTION

- Apply the sealer evenly so that there are no seams.

8-2 REPLACEMENT

8-2-1 REMOVAL AND INSTALLATION



8-2-2 REMOVAL POINT

1. Inspect any adjacent fittings before welding any new parts, as it will affect the exterior appearance.
2. Tack new parts, then follow the body dimensions diagram and measure the dimensions for each part. (Refer to body dimensions)
3. After installation, apply undercoat to the relevant areas. (Refer to rust treatment)
4. For the welds on the closed section structure, after applying a topcoat, apply an anti-rust agent to the insides.
5. Apply body sealer before tacking new parts.

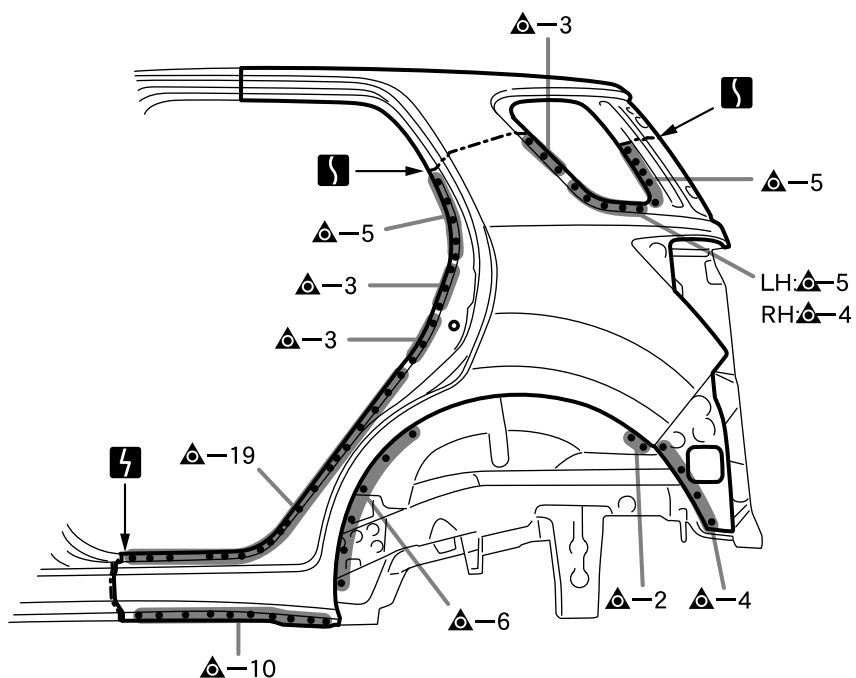
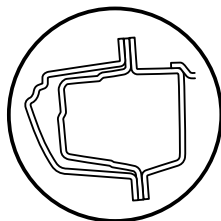
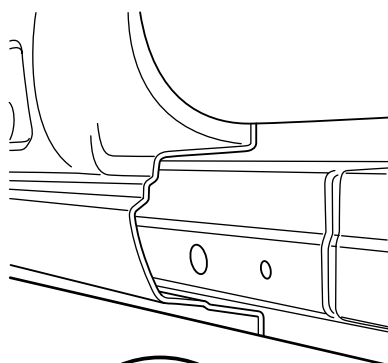
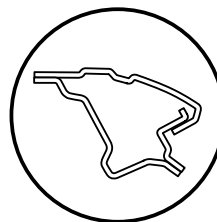
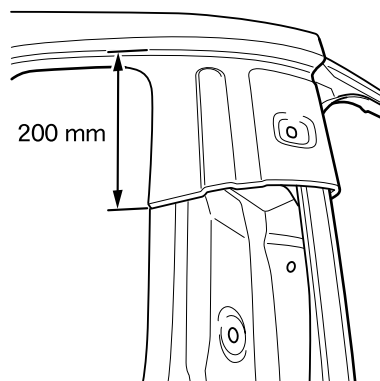
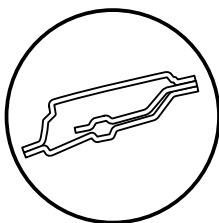
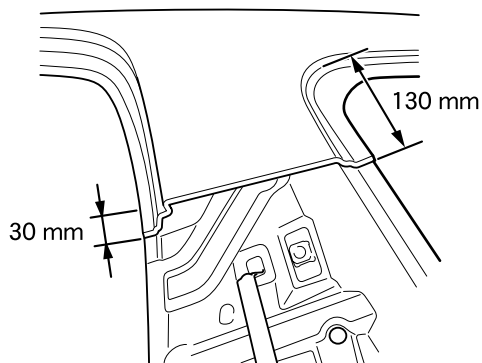
CAUTION

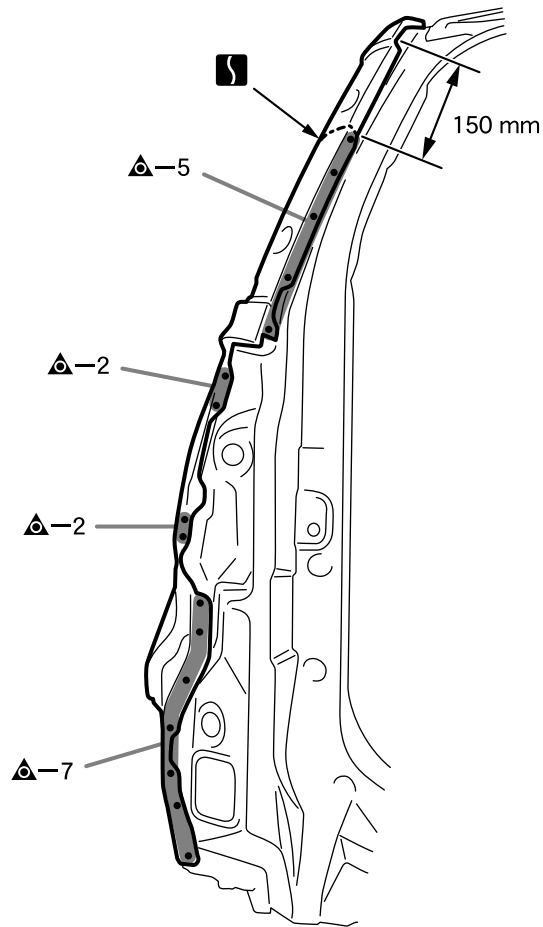
- Apply the sealer evenly so that there are no seams.

9 QUARTER PANEL

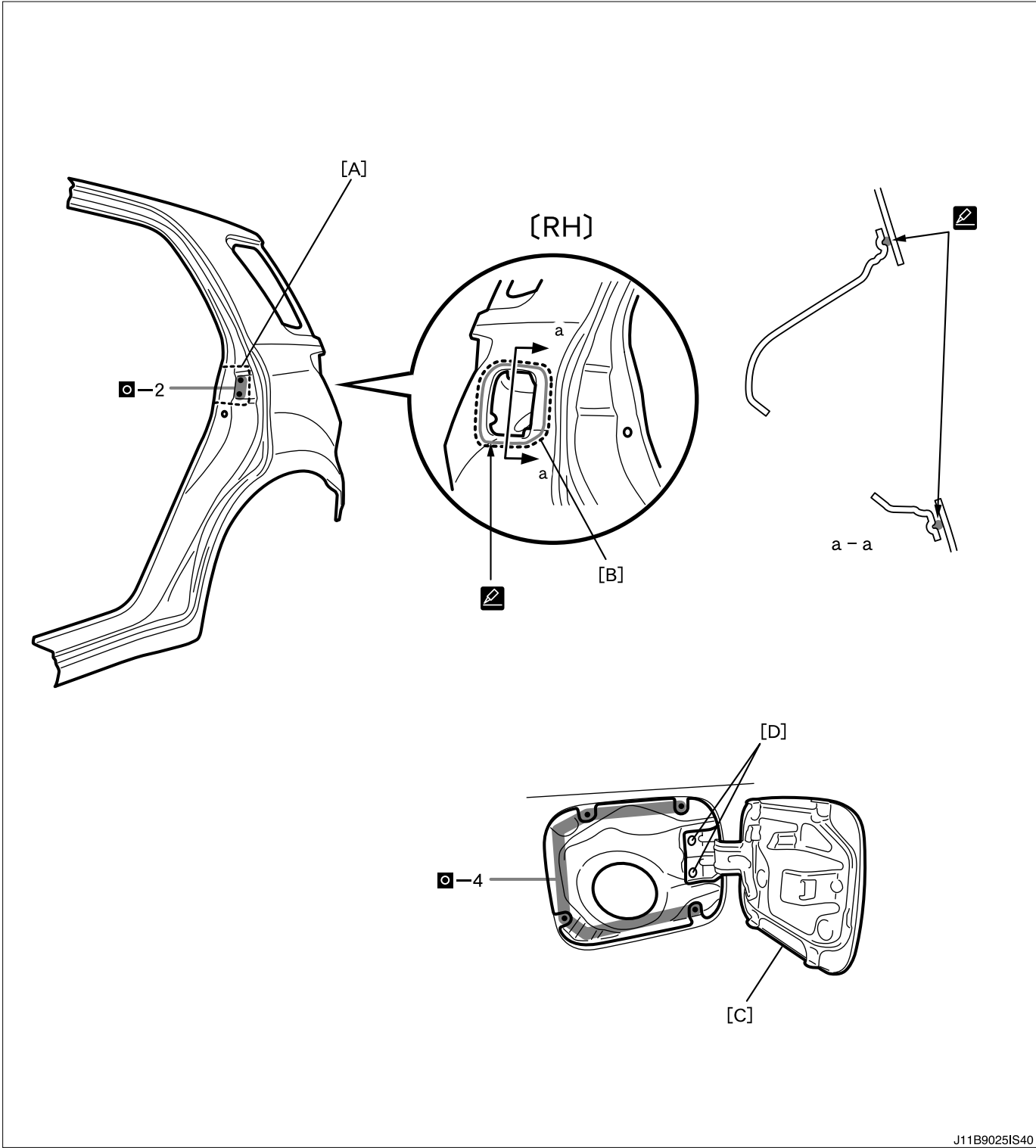
9-1 REPLACEMENT

9-1-1 REMOVAL





9-1-2 INSTALLATION



J11B9025IS40

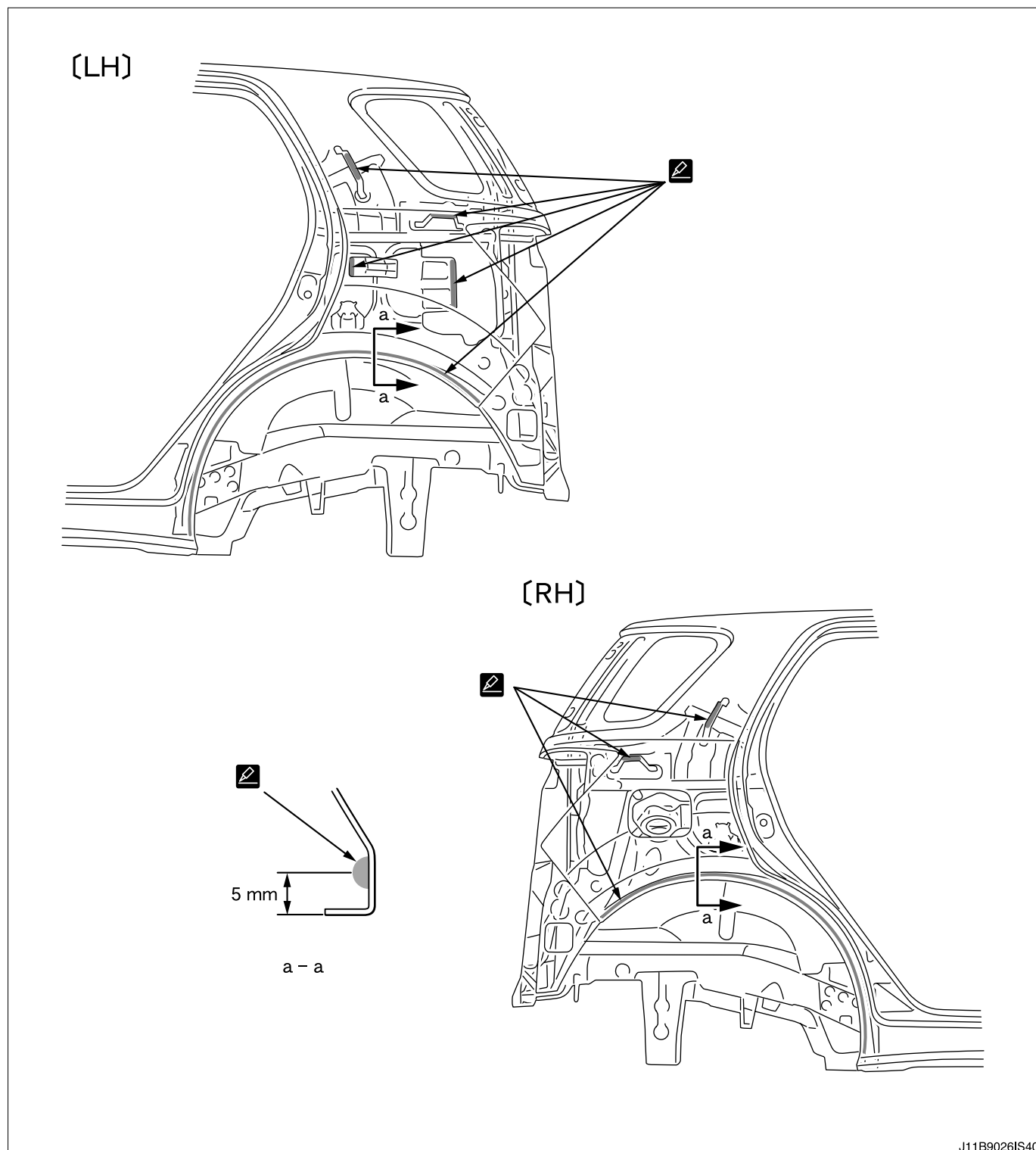
Code	Part name
[A]	Quarter lock pillar reinforcement
[B]	Fuel inlet box
[C]	Fuel filler opening lid
[D]	Waterproofing rivet

9-1-3 INSTALLATION POINT

1. Apply body sealer before installing new parts.

CAUTION

- Apply the sealer evenly so that there are no seams.

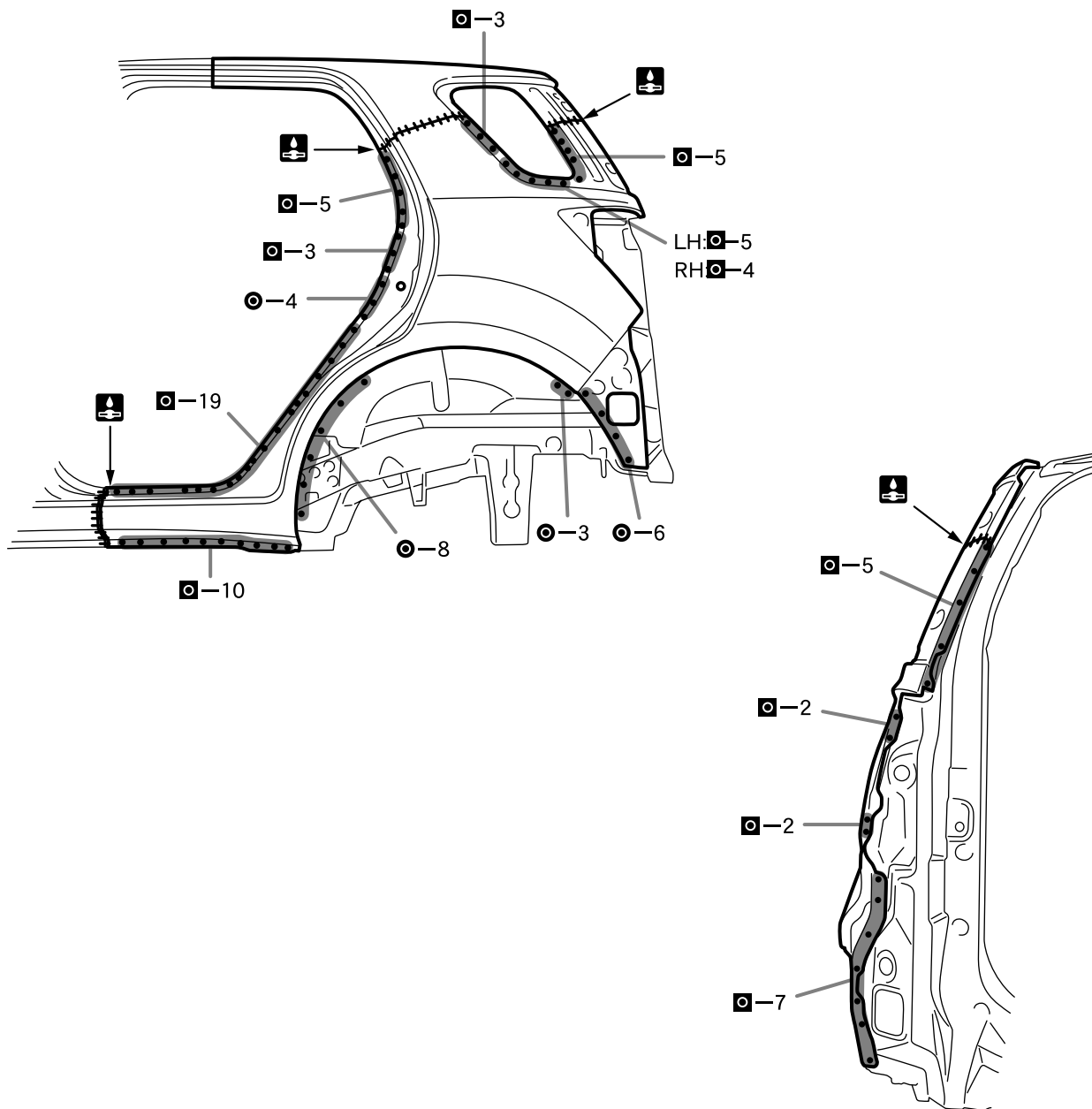


9-1-4 INSTALLATION POINT

1. Inspect any adjacent fittings before welding any new parts, as it will affect the exterior appearance.
2. Tack new parts, then follow the body dimensions diagram and measure the dimensions for each part. (Refer to body dimensions)
3. Apply body sealer to the wheel arch before tacking new parts.

CAUTION

- Apply the body sealer in a way that does not protrude, at a distance of about 5 mm from the flange. If it protrudes, a good weld is not possible.
- Apply the sealer in the amount of about 3 to 4 mm in diameter, and apply the sealer evenly so that there are no seams.



J11B9027IS40

9-1-5 INSTALLATION POINT

1. Inspect any adjacent fittings before welding any new parts, as it will affect the exterior appearance.
2. Tack new parts, then follow the body dimensions diagram and measure the dimensions for each part. (Refer to body dimensions)
3. After installation, fill in the relevant areas with urethane foam. (Refer to the data at the end of this volume)
4. After installation, apply body sealer and undercoat to the relevant areas. (Refer to rust treatment)
5. For the welds on the closed section structure, after applying a topcoat, apply an anti-rust agent to the insides.

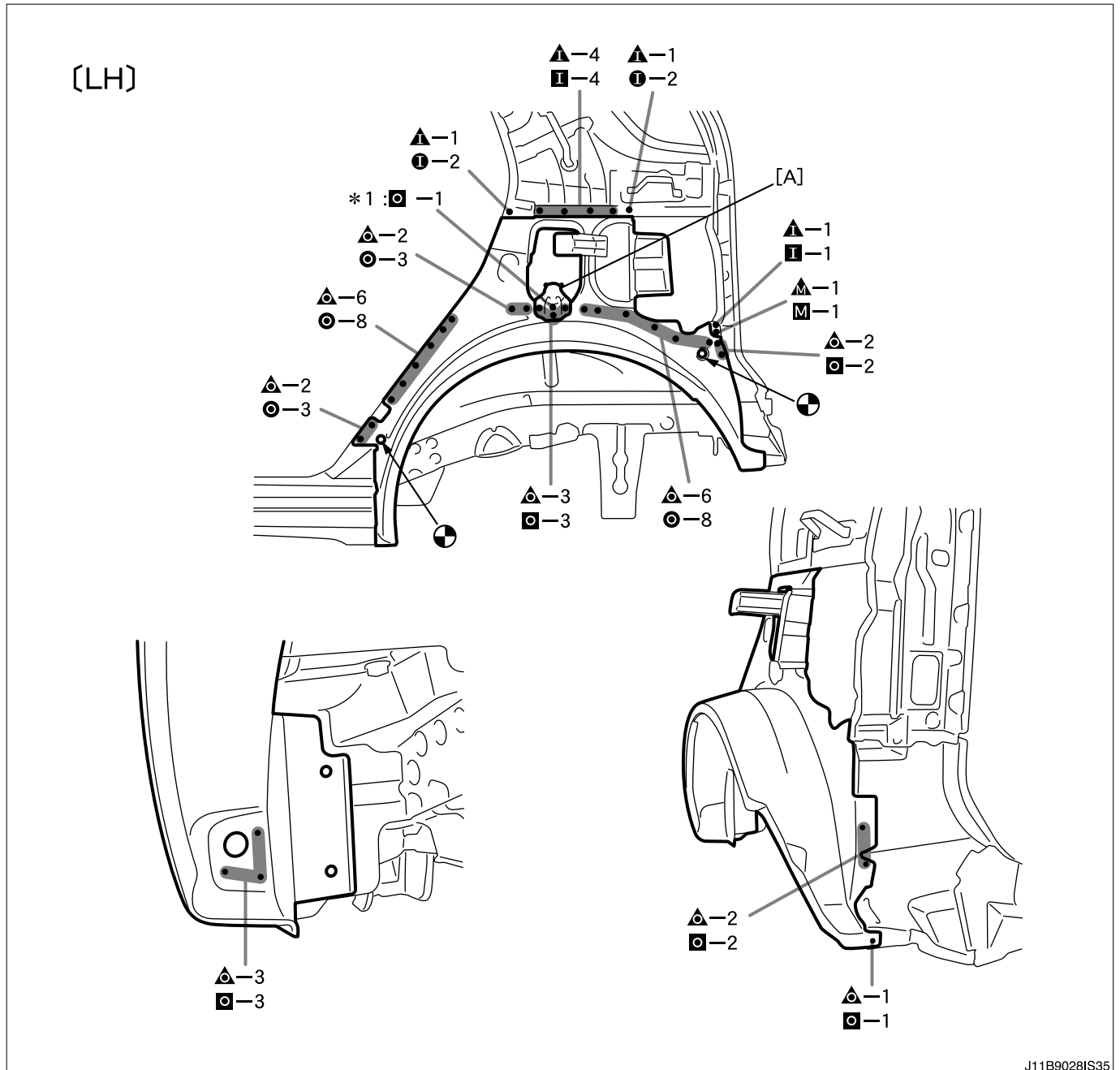
10 QUARTER WHEEL HOUSE PANEL OUTER

10-1 REPLACEMENT

10-1-1 REMOVAL CONDITIONS

- 1.Remove the necessary part or component of the quarter-panel extension rear lower.

10-1-2 REMOVAL AND INSTALLATION



*1: Installation only

Code	Part name
[A]	Seat belt anchor reinforcement No. 2 lower

10-1-3 REMOVAL POINT

- 1.Remove seat belt anchor reinforcement No. 2 at the same time. Make rough cuts on the wheel arch, and then drive a chisel into the adhesive coating areas to pry apart.

10-1-4 INSTALLATION POINT

- 1.After installation, apply body sealer and undercoat to the relevant areas.(Refer to rust treatment)
- 2.For the welds on the closed section structure, after applying a topcoat, apply an anti-rust agent to the insides.

[illegible]

*1: Installation only

10-1-5 INSTALLATION POINT

- ## 10-1-6 INSTALLATION CONDITIONS

1. Install the quarter-panel extension rear lower.

11 QUARTER PANEL EXTENSION REAR LOWER

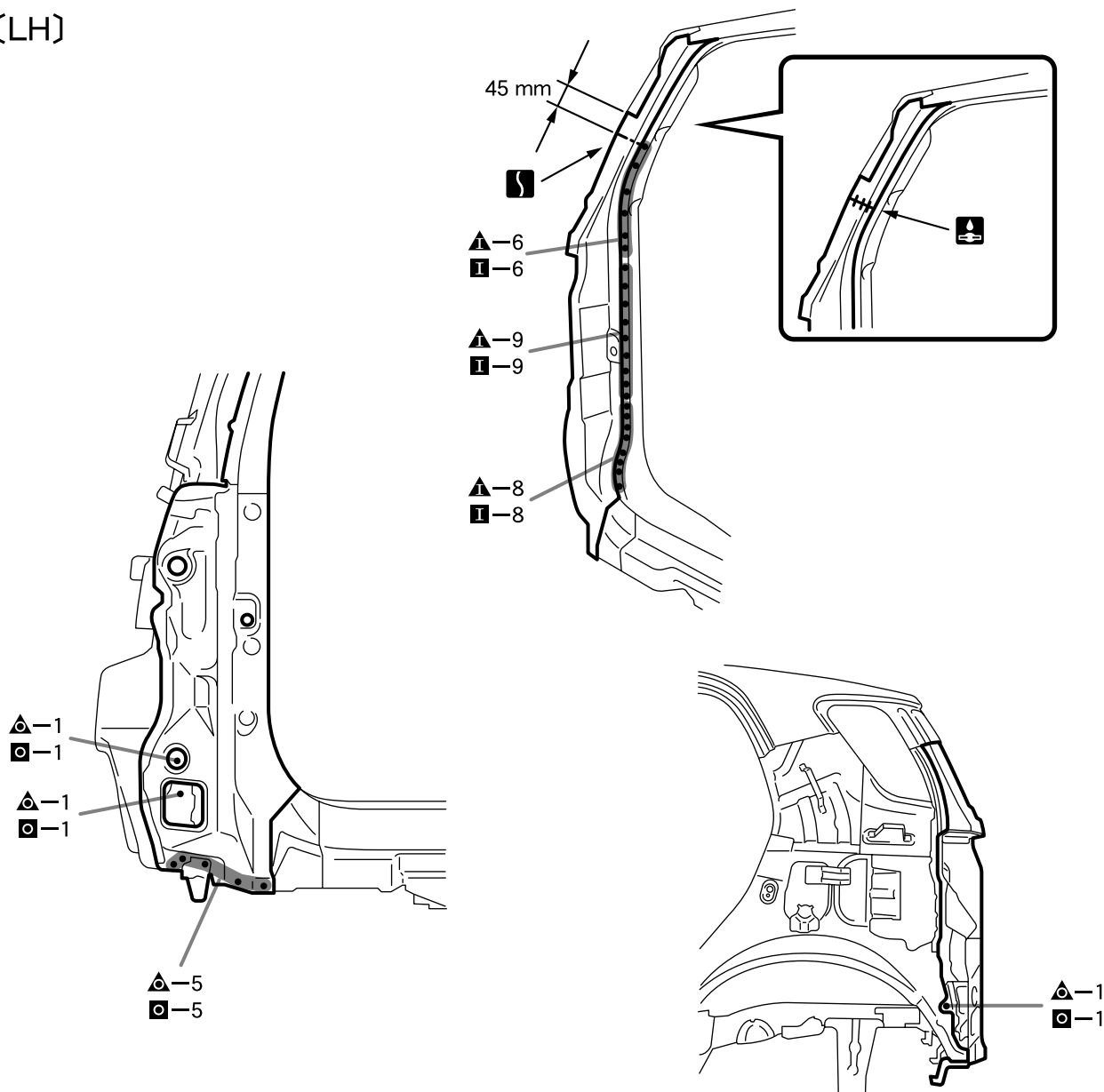
11-1 REPLACEMENT

11-1-1 REMOVAL CONDITIONS

1.Remove the necessary part or component of the quarter panel.

11-1-2 REMOVAL AND INSTALLATION

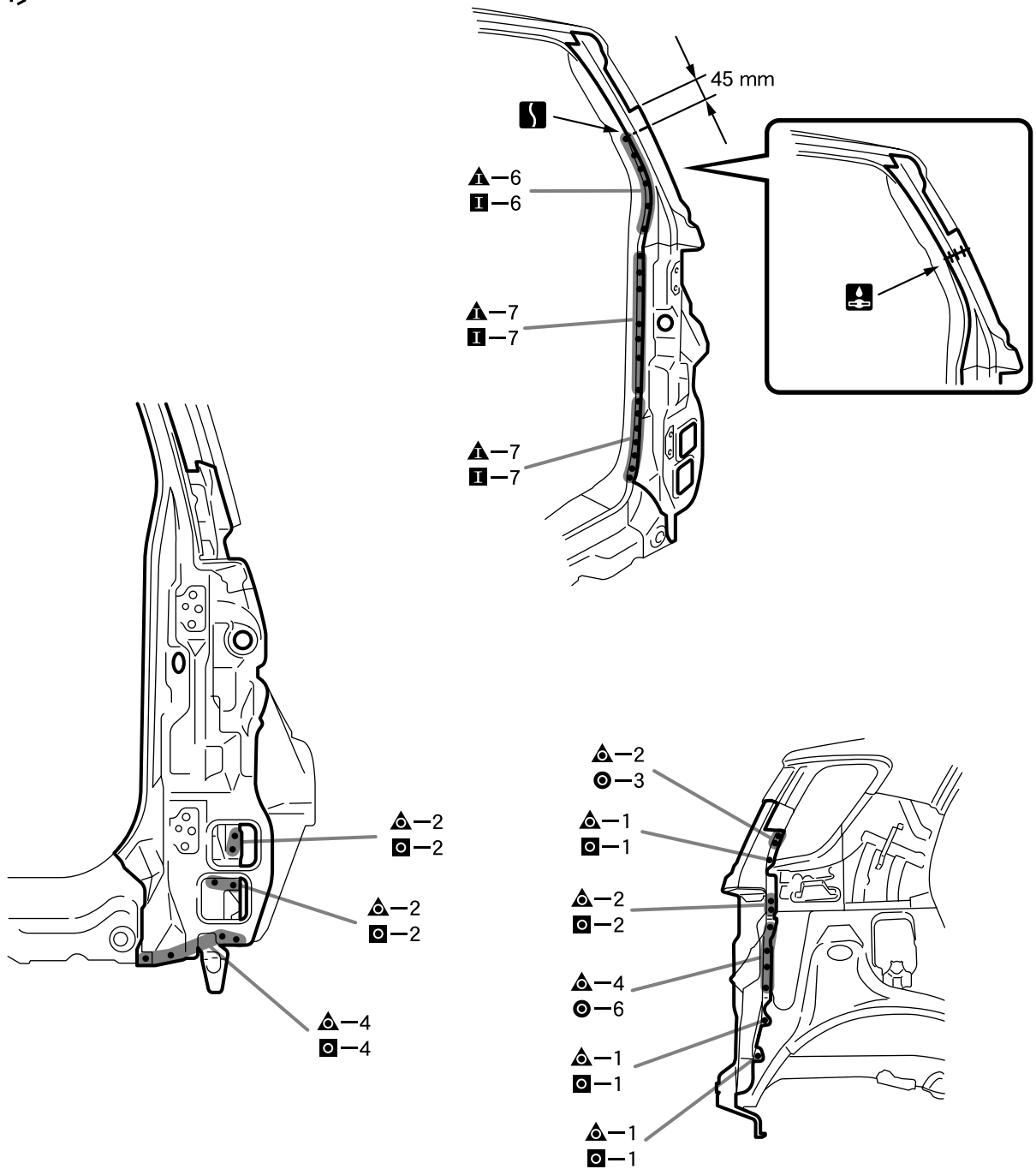
(LH)



11-1-3 INSTALLATION POINT

1. Inspect any adjacent fittings before welding any new parts, as it will affect the exterior appearance.
2. Tack new parts, then follow the body dimensions diagram and measure the dimensions for each part. (Refer to body dimensions)
3. After installation, apply body sealer to the relevant areas. (Refer to rust treatment)
4. For the welds on the closed section structure, after applying a topcoat, apply an anti-rust agent to the insides.

[RH]



J11B9031IS40

11-1-4 INSTALLATION POINT

1. Inspect any adjacent fittings before welding any new parts, as it will affect the exterior appearance.
2. Tack new parts, then follow the body dimensions diagram and measure the dimensions for each part. (Refer to body dimensions)
3. After installation, apply body sealer to the relevant areas. (Refer to rust treatment)
4. For the welds on the closed section structure, after applying a topcoat, apply an anti-rust agent to the insides.

11-1-5 INSTALLATION CONDITIONS

1. Install the quarter panel.

12 ROOF SIDE PANEL INNER LOWER

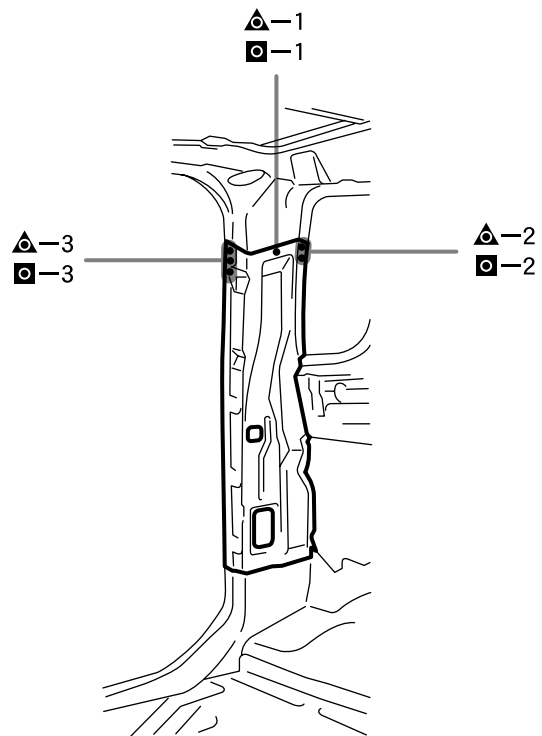
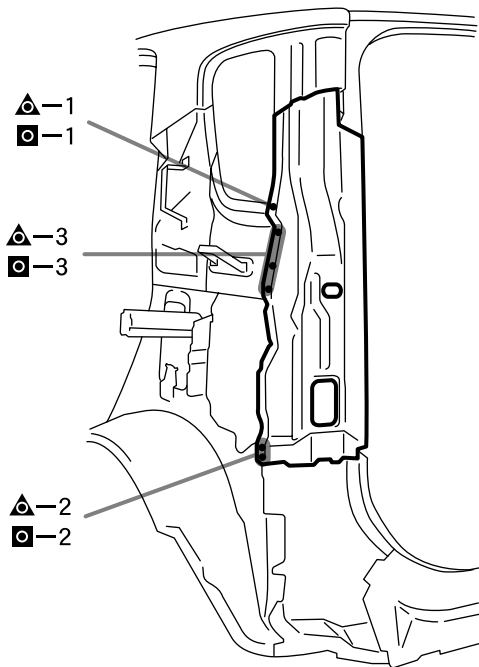
12-1 REPLACEMENT

12-1-1 REMOVAL CONDITIONS

1.Remove the necessary part or component of the quarter-panel extension rear lower.

12-1-2 REMOVAL AND INSTALLATION

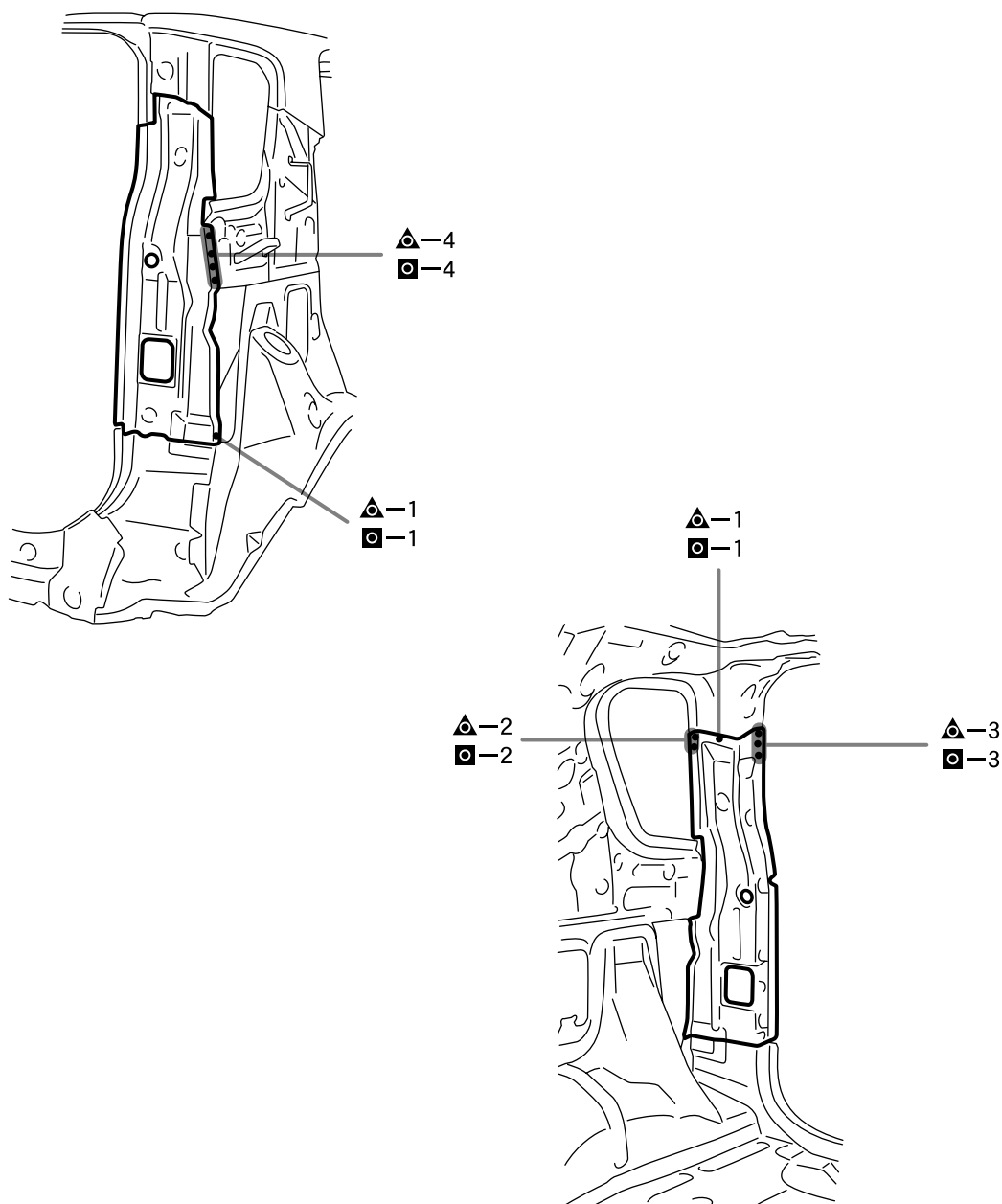
[LH]



12-1-3 INSTALLATION POINT

1. Inspect any adjacent fittings before welding any new parts, as it will affect the exterior appearance.
2. Tack new parts, then follow the body dimensions diagram and measure the dimensions for each part. (Refer to body dimensions)
3. After installation, apply body sealer to the relevant areas. (Refer to rust treatment)
4. For the welds on the closed section structure, after applying a topcoat, apply an anti-rust agent to the insides.

[RH]



J11B9033IS40

12-1-4 INSTALLATION POINT

1. After installation, apply body sealer and undercoat to the relevant areas. (Refer to rust treatment)
2. For the welds on the closed section structure, after applying a topcoat, apply an anti-rust agent to the insides.

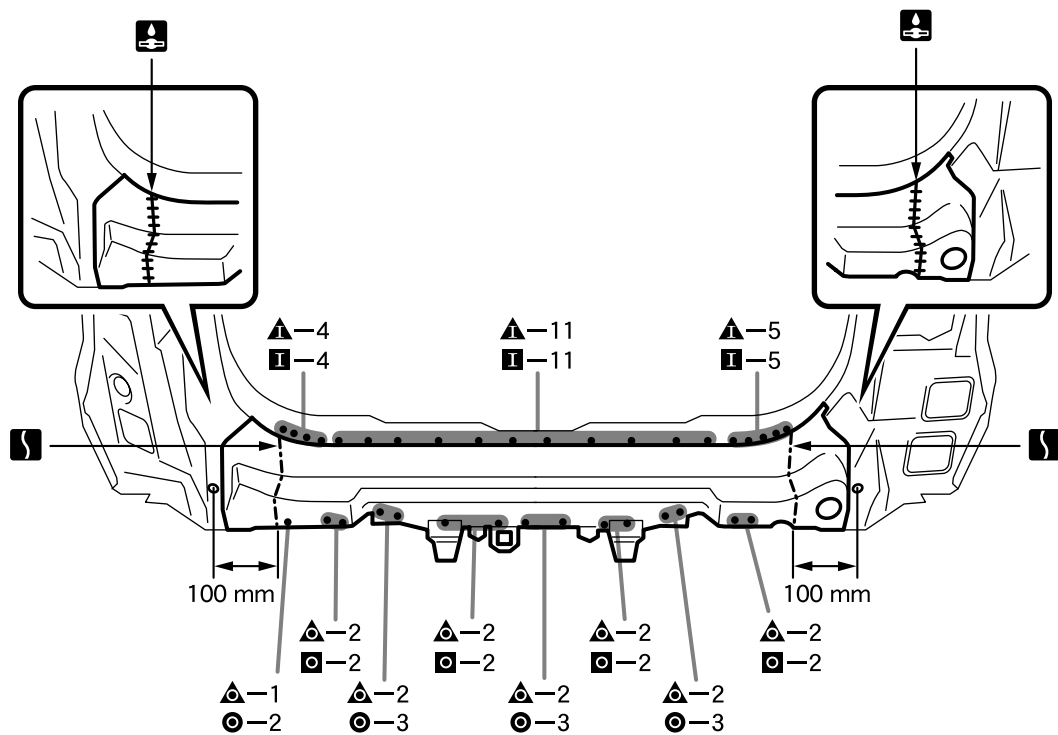
12-1-5 INSTALLATION CONDITIONS

1. Install the quarter-panel extension rear lower.

13 BODY LOWER BACK PANEL

13-1 REPLACEMENT(CUTTING)

13-1-1 REMOVAL AND INSTALLATION



J11B9034IS40

13-1-2 INSTALLATION POINT

1. Inspect any adjacent fittings before welding any new parts, as it will affect the exterior appearance.
2. For the welds on the closed section structure, after applying a topcoat, apply an anti-rust agent to the insides.

1. Inspect any adjacent fittings before welding any new parts, as it will affect the exterior appearance.
2. After installation, apply body sealer to the relevant areas. (Refer to rust treatment)
3. For the welds on the closed section structure, after applying a topcoat, apply an anti-rust agent to the insides.

13-2-4 INSTALLATION CONDITIONS

1. Install the quarter-panel extension rear lower.

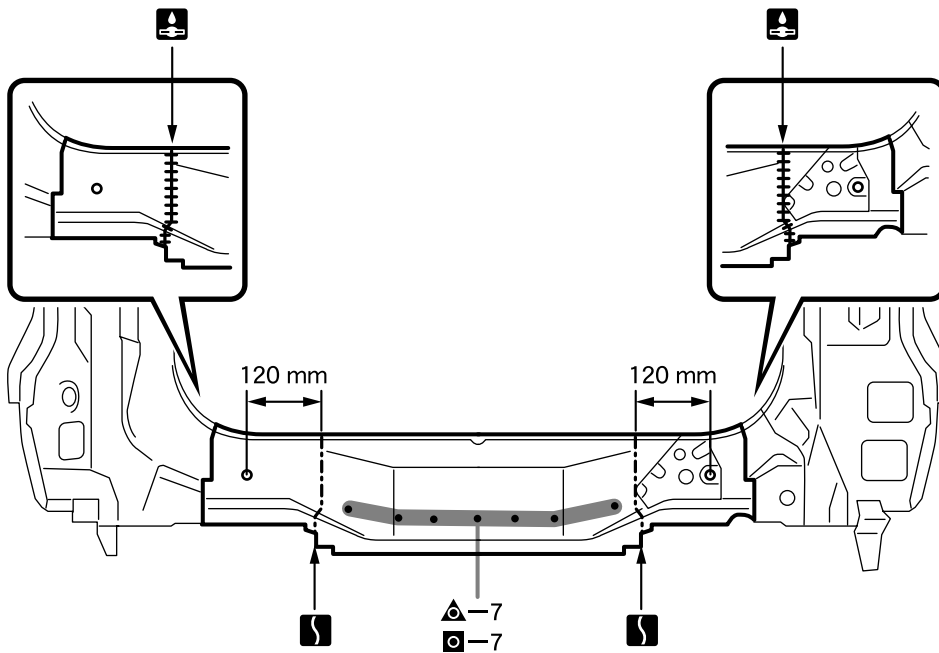
14 BODY LOWER BACK PANEL INNER

14-1 REPLACEMENT(CUTTING)

14-1-1 REMOVAL CONDITIONS

- 1.Remove the necessary part or component of the body lower back panel.

14-1-2 REMOVAL AND INSTALLATION



J11B9036IS40

14-1-3 INSTALLATION POINT

- 1.Tack new parts, then follow the body dimensions diagram and measure the dimensions for each part.(Refer to body dimensions)
- 2.For the welds on the closed section structure, after applying a topcoat, apply an anti-rust agent to the insides.

14-1-4 INSTALLATION CONDITIONS

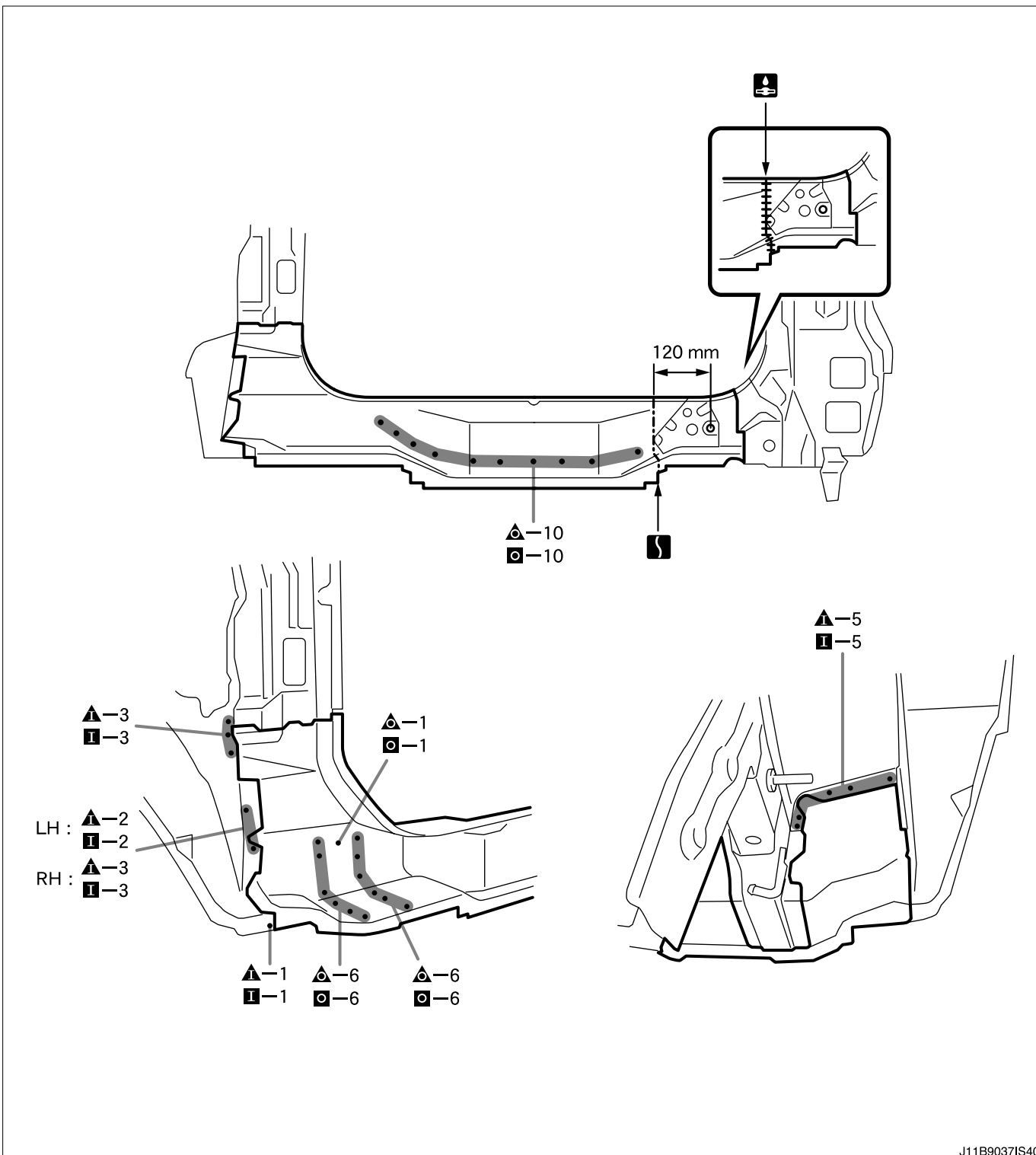
1. Install the body lower back panel.

14-2 REPLACEMENT

14-2-1 REMOVAL CONDITIONS

- 1.Remove the necessary part or component of the body lower back panel.

14-2-2 REMOVAL AND INSTALLATION



14-2-3 INSTALLATION POINT

- 1.Tack new parts, then follow the body dimensions diagram and measure the dimensions for each part.(Refer to body dimensions)
- 2.For the welds on the closed section structure, after applying a topcoat, apply an anti-rust agent to the insides.

14-2-4 INSTALLATION CONDITIONS

- 1.Install the body lower back panel.

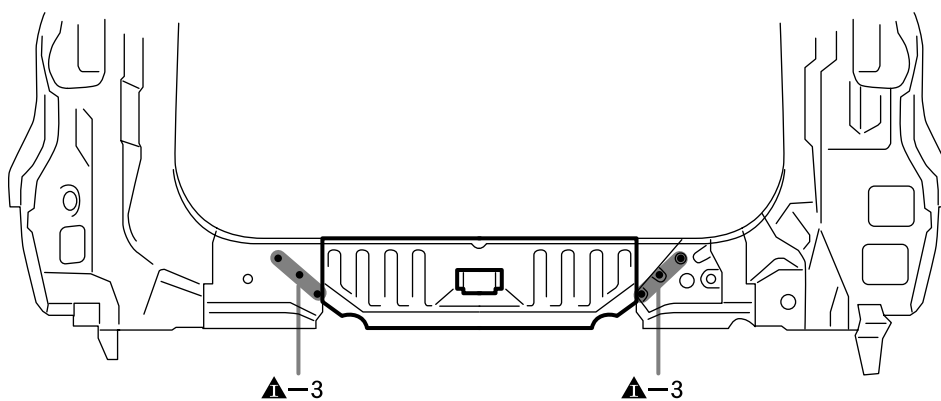
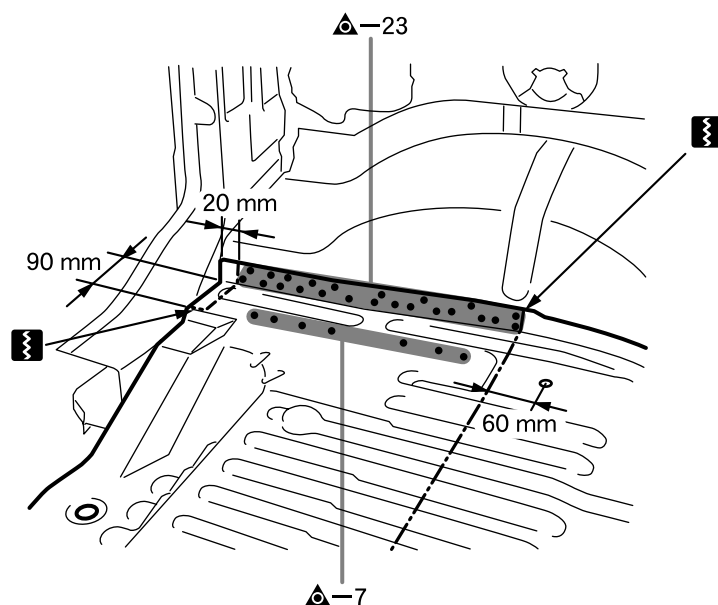
15 REAR FLOOR PAN

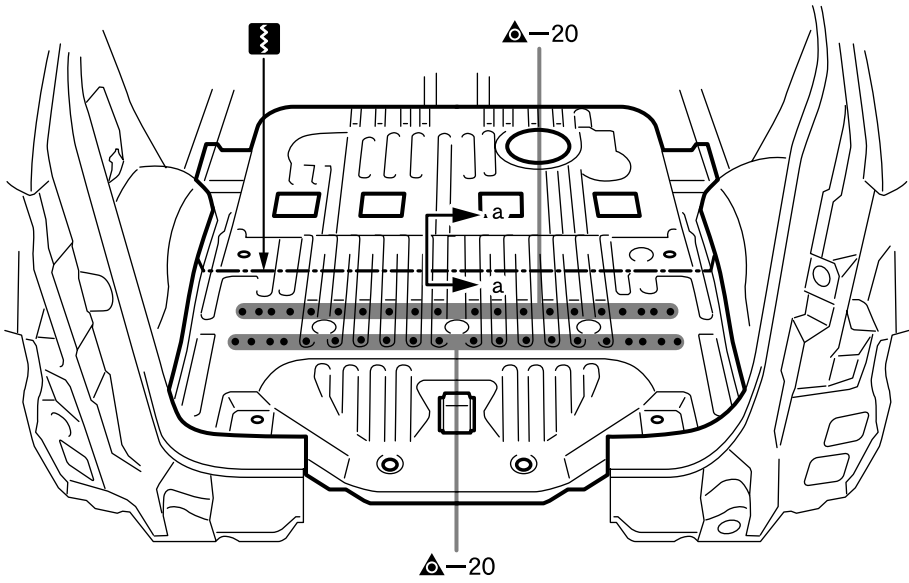
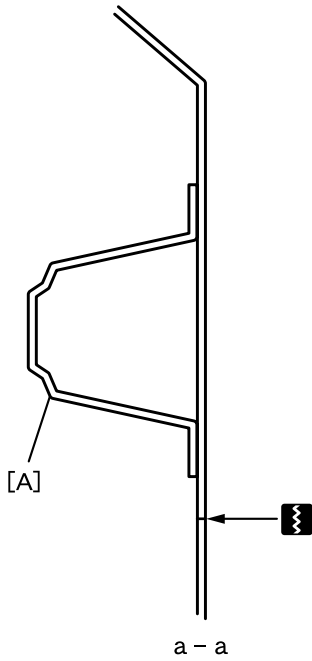
15-1 REPLACEMENT(CUTTING)

15-1-1 REMOVAL CONDITIONS

1.Remove the necessary part or component of the body lower back panel inner.

15-1-2 REMOVAL

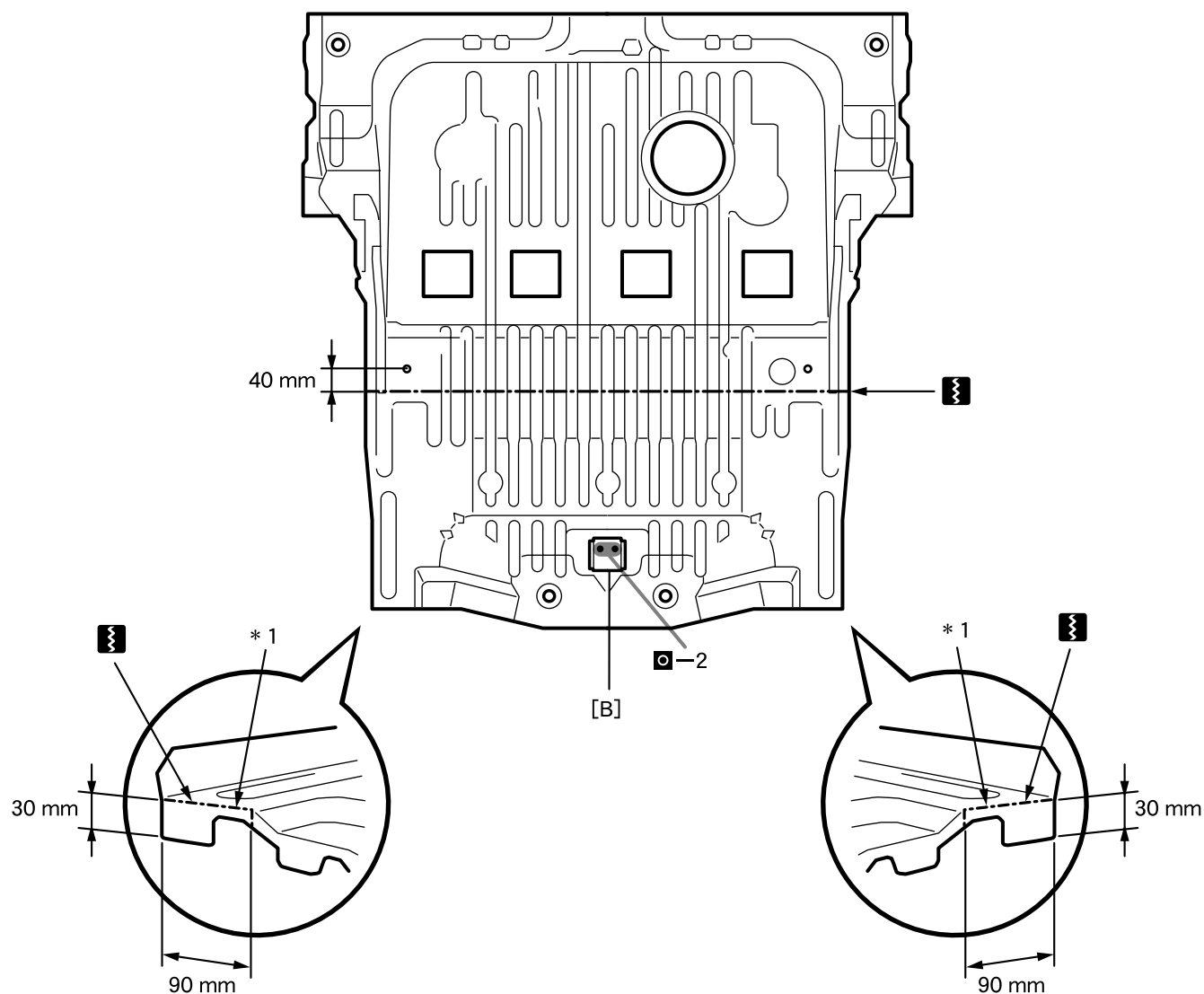




J11B9039IS40

Code	Part name
[A]	Rear floor crossmember No. 3

15-1-3 INSTALLATION

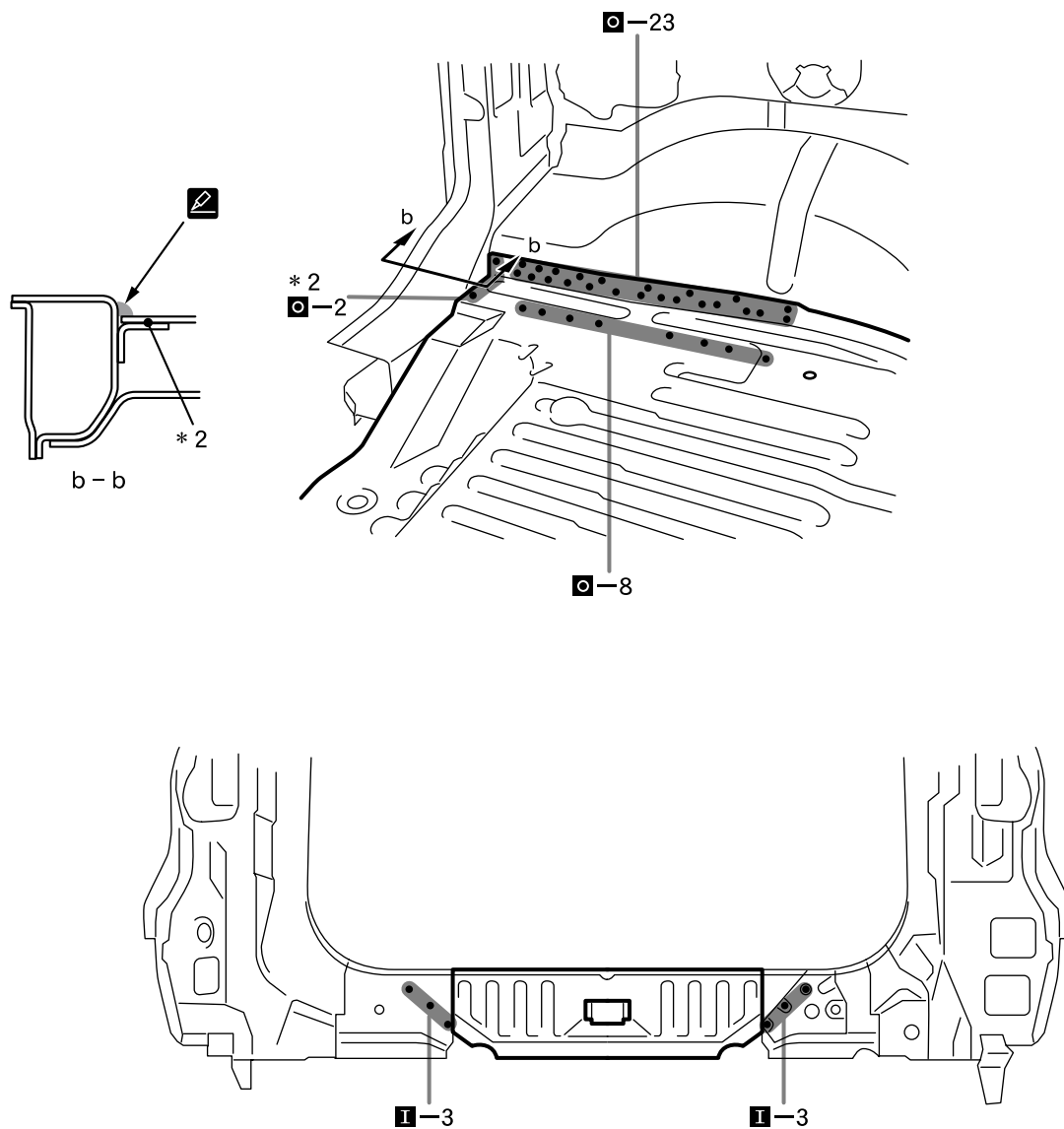


J11B9040IS40

Code	Part name
[B]	Jack support bracket

15-1-4 INSTALLATION POINT

1. At a point overlapping the cut-off point by approximately 20 mm, cut off the new rear floor pan.
2. Cut off one part of the new rear floor pan.



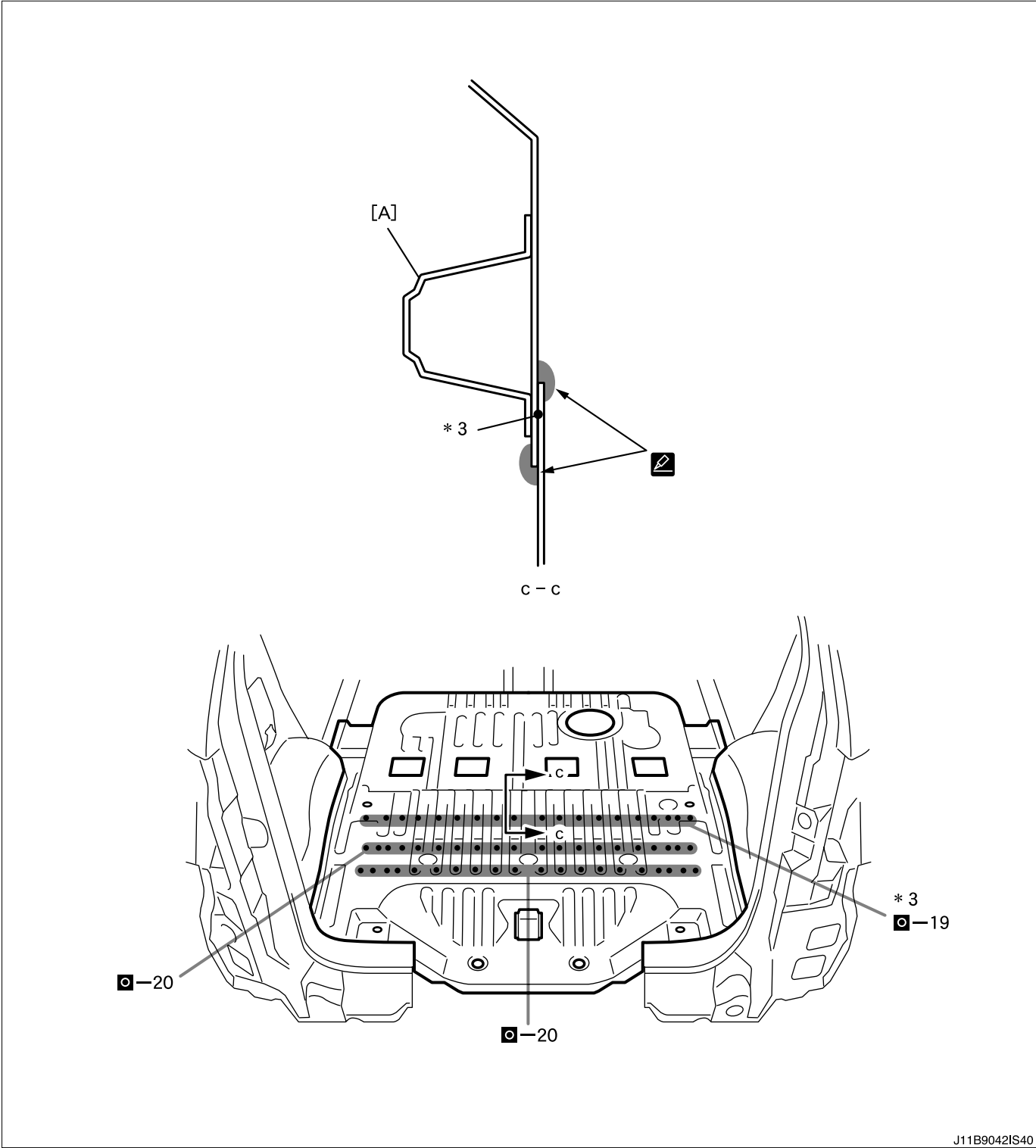
J11B9041IS40

15-1-5 INSTALLATION POINT

1.*2: Plug weld the overlapping parts and apply body sealer from the topside.

CAUTION

- Securely seal the welds.
- Apply the sealer evenly so that there are no seams.



J11B9042IS40

Code	Part name
[A]	Rear floor crossmember No. 3

15-1-6 INSTALLATION POINT

1.*3: Plug weld the overlapping parts, and apply the body sealer from both sides.

CAUTION

- Securely seal the welds.
- Apply the sealer evenly so that there are no seams.

2.After installation, apply body sealer and undercoat to the relevant areas.(Refer to rust treatment)

3.For the welds on the closed section structure, after applying a topcoat, apply an anti-rust agent to the insides.

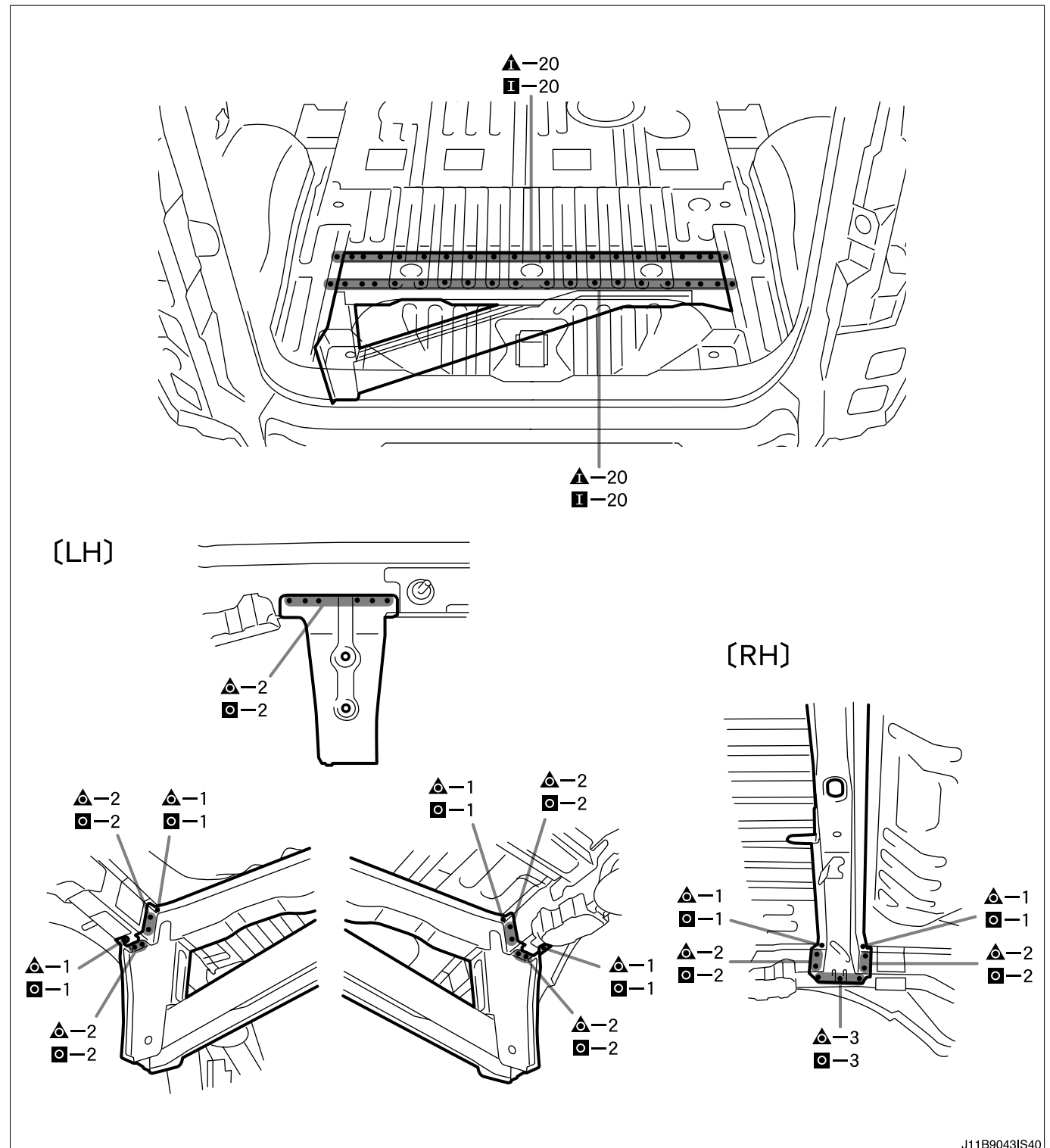
15-1-7 INSTALLATION CONDITIONS

1.Install the body lower back panel inner.

16 REAR FLOOR CROSS MEMBER REINFORCEMENT NO.4

16-1 REPLACEMENT

16-1-1 REMOVAL AND INSTALLATION



J11B9043IS40

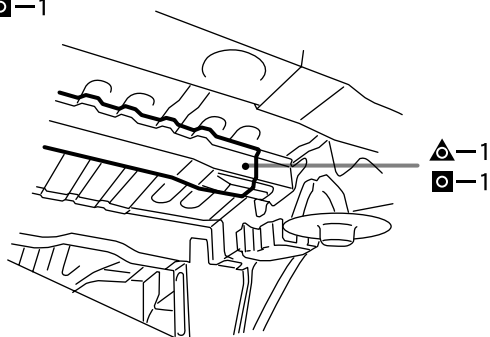
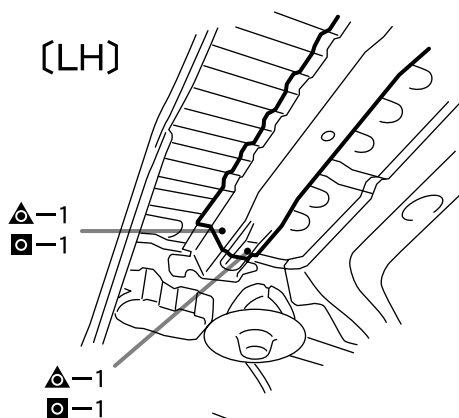
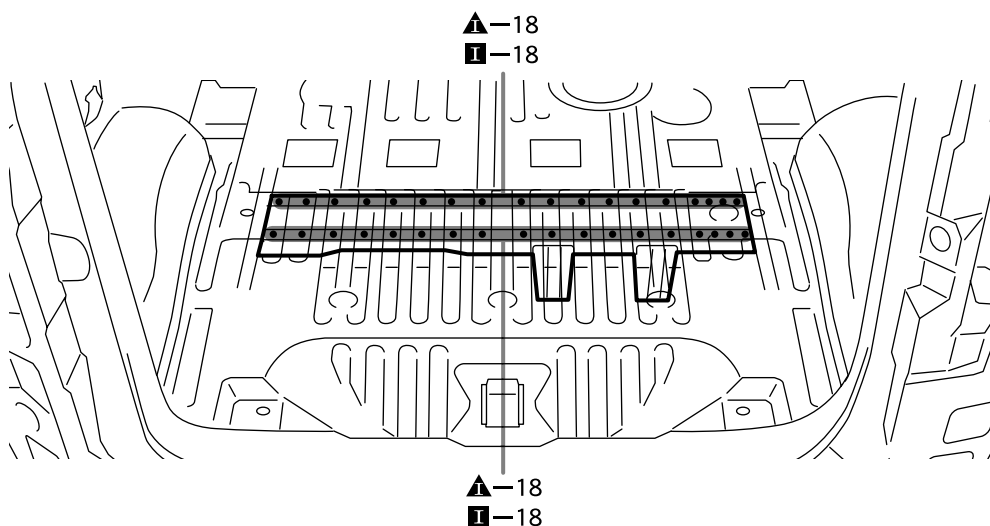
16-1-2 INSTALLATION POINT

1. Tack new parts, then follow the body dimensions diagram and measure the dimensions for each part. (Refer to body dimensions)
2. After installation, apply body sealer and undercoat to the relevant areas. (Refer to rust treatment)
3. For the welds on the closed section structure, after applying a topcoat, apply an anti-rust agent to the insides.

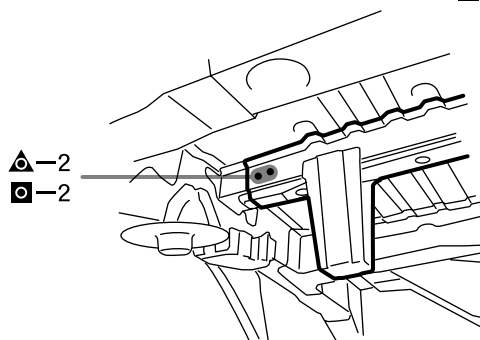
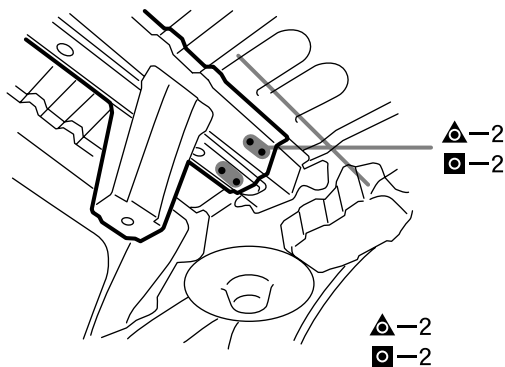
17 REAR FLOOR CROSS MEMBER NO.3

17-1 REPLACEMENT

17-1-1 REMOVAL AND INSTALLATION



[RH]



J11B9044IS40

17-1-2 INSTALLATION POINT

1. Tack new parts, then follow the body dimensions diagram and measure the dimensions for each part. (Refer to body dimensions)
2. After installation, apply body sealer and undercoat to the relevant areas. (Refer to rust treatment)
3. For the welds on the closed section structure, after applying a topcoat, apply an anti-rust agent to the insides.

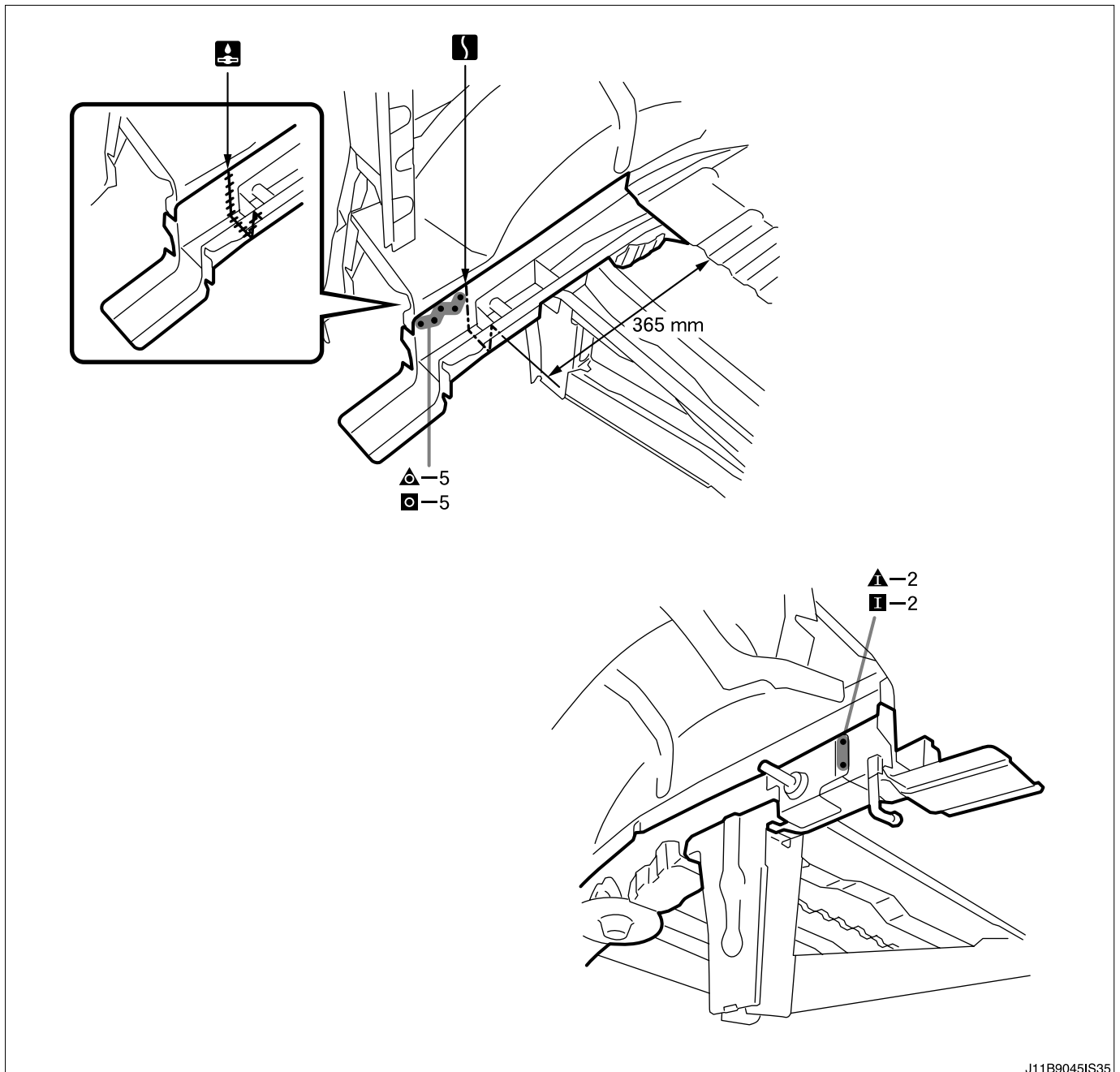
18 REAR FLOOR SIDE MEMBER

18-1 REPLACEMENT(CUTTING)

18-1-1 REMOVAL CONDITIONS

- 1.Remove the necessary part or component of the body lower back panel inner.
- 2.Remove the necessary part or component of the rear floor pan.

18-1-2 REMOVAL AND INSTALLATION



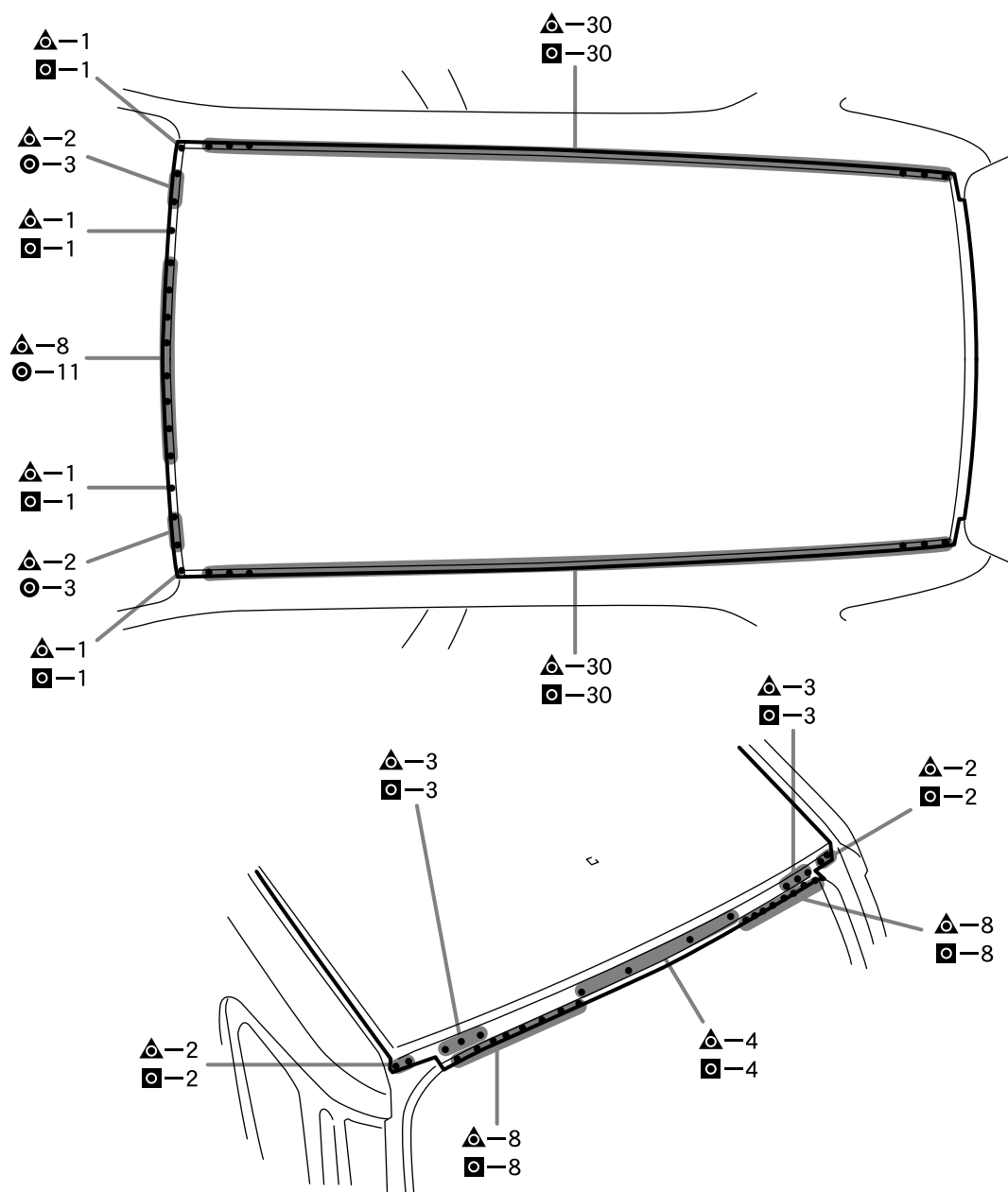
J11B9045IS35

18-1-3 INSTALLATION POINT

- 1.Tack new parts, then follow the body dimensions diagram and measure the dimensions for each part.(Refer to body dimensions)
- 2.After installation, apply undercoat to the relevant areas.(Refer to rust treatment)
- 3.For the welds on the closed section structure, after applying a topcoat, apply an anti-rust agent to the insides.

18-1-4 INSTALLATION CONDITIONS

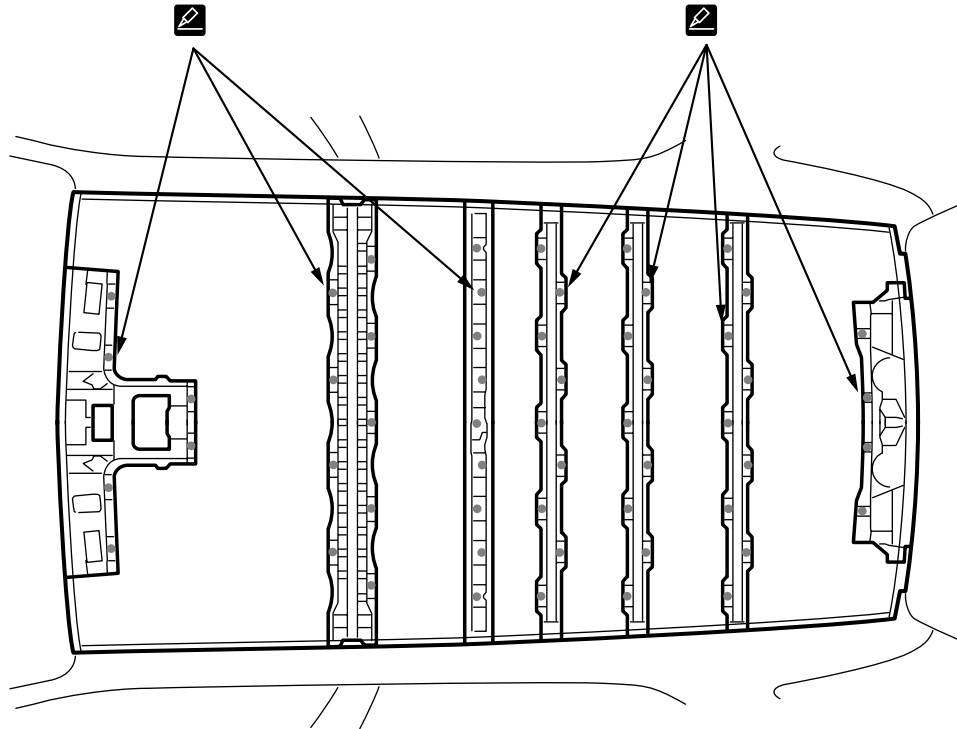
- 1.Install the rear floor pan.
- 2.Install the body lower back panel inner.

19 ROOF PANEL**19-1 REPLACEMENT****19-1-1 REMOVAL AND INSTALLATION**

J11B9046IS40

19-1-2 INSTALLATION POINT

1. Inspect any adjacent fittings before welding any new parts, as it will affect the exterior appearance.
2. Tack new parts, then follow the body dimensions diagram and measure the dimensions for each part. (Refer to body dimensions)
3. After installation, apply body sealer to the relevant areas. (Refer to rust treatment)



J11B9047IS40

19-1-3 INSTALLATION POINT

1. Before installing new parts, apply body sealer to the window shield header panel, roof panel reinforcement, and back door opening frame.

CAUTION

- Apply the sealer in the amount that it contacts the new parts.

2. After installation, apply body sealer to the relevant areas. (Refer to rust treatment)