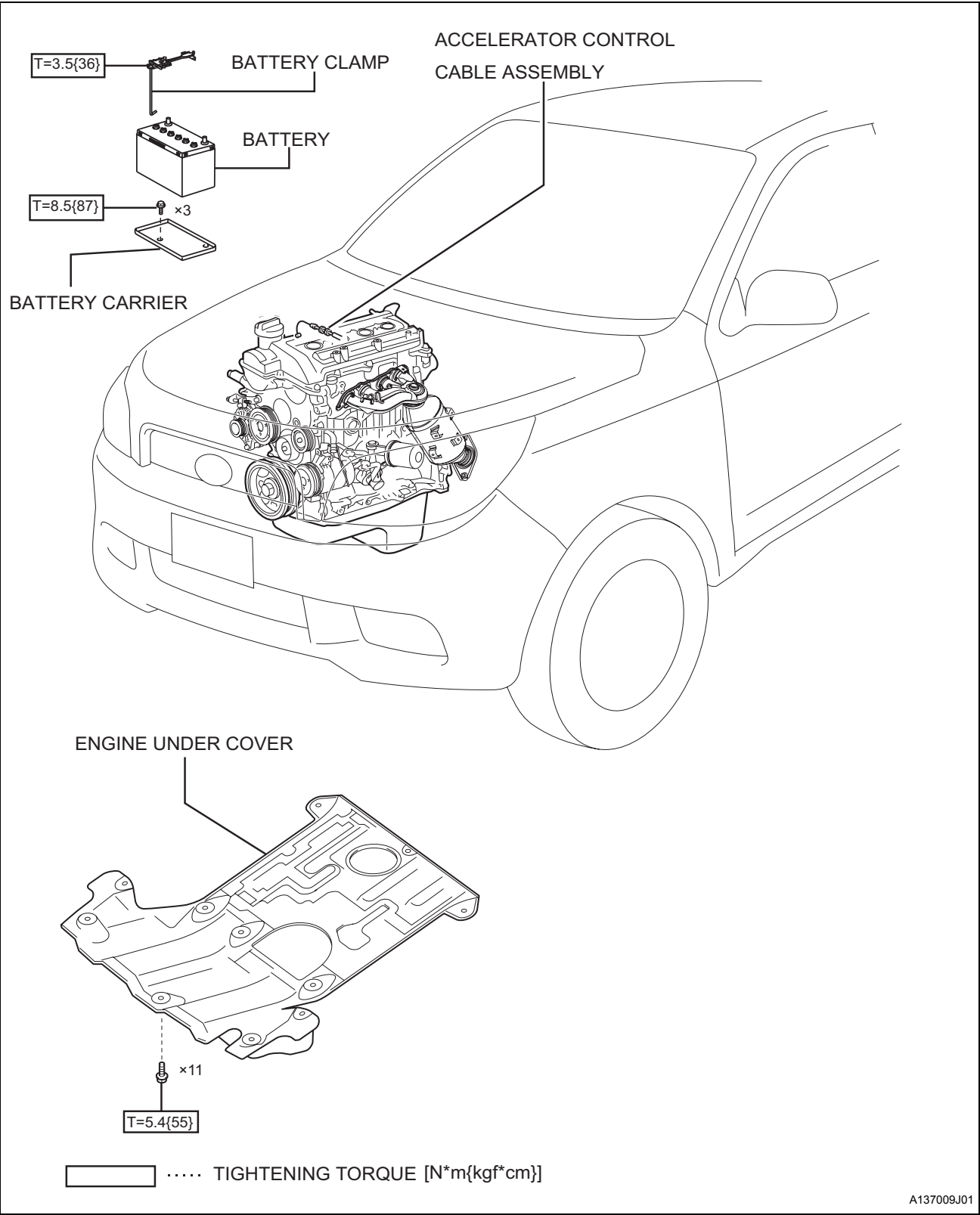
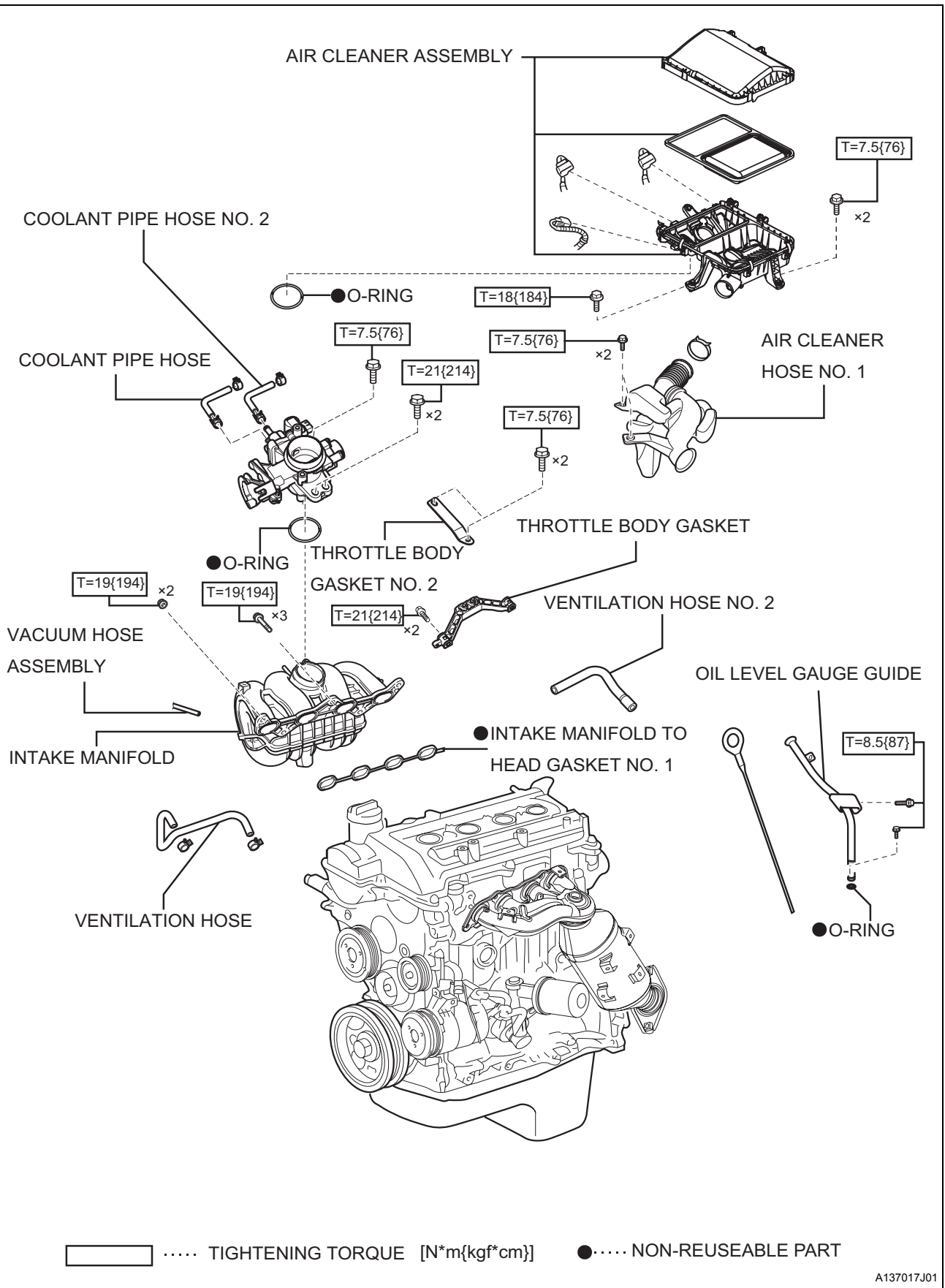


KNOCK CONTROL SENSOR (3SZ-VE)

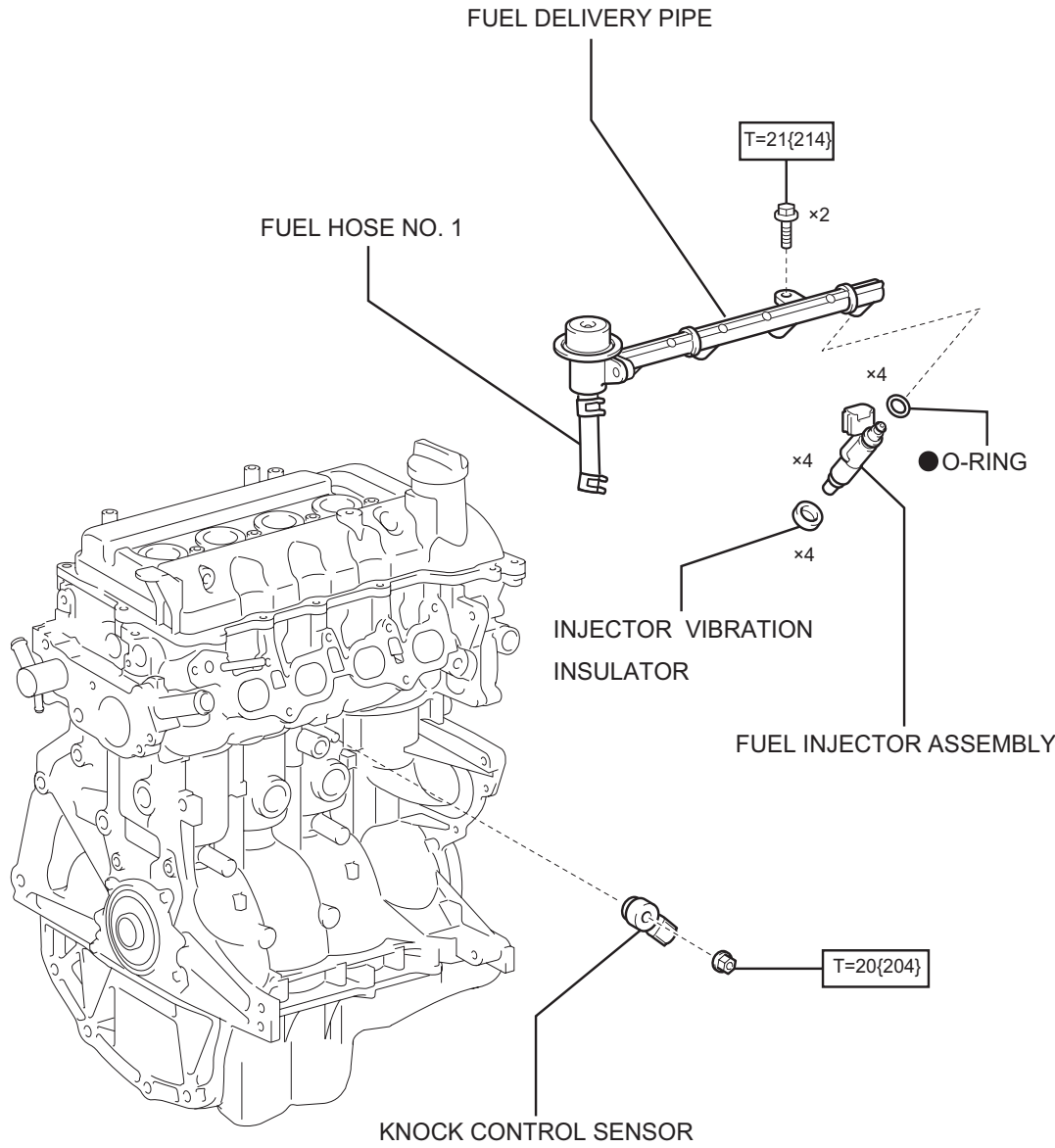
COMPONENTS

ES





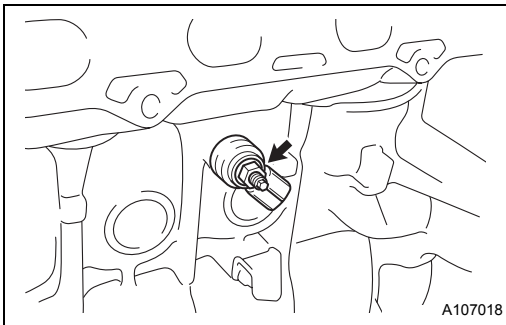
ES



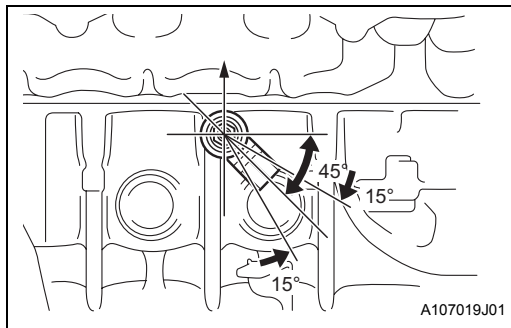
..... TIGHTENING TORQUE [N*m{kgf*cm}] ●..... NON-REUSEABLE PART

REMOVAL

1. **DISCONNECT NEGATIVE BATTERY TERMINAL**
(See Page RS-164)
2. **DRAIN ENGINE COOLANT** (See page CO-9)
3. **DISCHARGE FUEL SYSTEM PRESSURE** (See page EM-146)
4. **REMOVE BATTERY**
5. **REMOVE BATTERY CARRIER** (See page EM-146)
6. **REMOVE ENGINE UNDER COVER**
7. **REMOVE AIR CLEANER HOSE NO.1** (See page CO-15)
8. **REMOVE AIR CLEANER ASSEMBLY** (See page EM-146)
9. **DISCONNECT ACCELERATOR CONTROL CABLE ASSEMBLY**
(See page EM-147)
10. **REMOVE VENTILATION HOSE** (See page EM-147)
11. **REMOVE VENTILATION HOSE NO.2** (See page EM-147)
12. **DISCONNECT FUEL HOSE NO.1** (See page FU-10)
13. **REMOVE FUEL DELIVERY PIPE** (See page FU-10)
14. **DISCONNECT WATER BY-PASS HOSE NO.2** (See page ES-127)
15. **DISCONNECT WATER BY-PASS HOSE** (See page ES-127)
16. **REMOVE THROTTLE BODY ASSEMBLY** (See page ES-127)
17. **REMOVE THROTTLE BODY BRACKET** (See page EM-149)
18. **REMOVE OIL LEVEL GAUGE GUIDE** (See page EM-148)
19. **DISCONNECT VACUUM HOSE ASSEMBLY**
20. **REMOVE INTAKE MANIFOLD** (See page EM-149)
21. **REMOVE KNOCK CONTROL SENSOR**
 - (a) Disconnect the connector.
 - (b) Remove the nut, then remove the knock control sensor.

ES

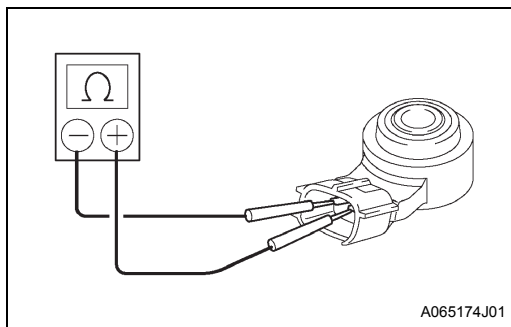
INSTALLATION



ES

1. **INSTALL KNOCK CONTROL SENSOR**
 - (a) Install the knock control sensor with the nut in the direction shown in the illustration.
Torque: 20 N*m (204 kgf*cm)
 - (b) Connect the connector.
2. **INSTALL INTAKE MANIFOLD** (See page EM-164)
3. **INSTALL THROTTLE BODY ASSEMBLY** (See page EM-164)
4. **INSTALL FUEL INJECTOR ASSEMBLY** (See page FU-11)
5. **INSTALL FUEL DELIVERY PIPE** (See page FU-11)
6. **INSTALL OIL LEVEL GAUGE GUIDE** (See page EM-58)
7. **CONNECT FUEL HOSE NO.1** (See page FU-12)
8. **CONNECT ACCELERATOR CONTROL CABLE ASSEMBLY** (See page EM-165)
9. **INSTALL VENTILATION HOSE** (See page EM-166)
10. **INSTALL VENTILATION HOSE NO.2** (See page EM-166)
11. **INSTALL BATTERY CARRIER** (See page EM-167)
12. **INSTALL BATTERY**
13. **CONNECT NEGATIVE BATTERY TERMINAL** (See page EM-167)
14. **INSTALL AIR CLEANER ASSEMBLY** (See page EM-167)
15. **INSTALL AIR CLEANER HOSE NO.1** (See page CO-19)
16. **ADD COOLANT** (See page CO-9)
17. **CHECK FOR COOLANT LEAKS** (See page CO-10)
18. **CHECK COOLANT** (See page CO-10)
19. **PERFORM INITIALIZATION**
(See page SS-10.)

INSPECTION



1. **CHECK KNOCK CONTROL SENSOR**
 - (a) Check the resistance.
 - (1) Using a tester, measure the resistance between the connector terminals.
Standard:
120 to 280 Ω

